



## Annual Report



THE JERUSALEM FOUNDATION

مؤسسة صندوق القدس

הקרן לירושלים



## CONTENTS

From the President	4
Looking to 2030 and Beyond	7
Vision & Mission	10
Communal Strength	12
Creative Culture	24
Future Leadership	38
Jerusalem Foundation Culture and Community Fund	45
Financial Data 2019	46
Donors	48
Legacies, Endowments and Bequests	54
Leadership in Israel	56
Professional Staff in Israel	56
Leadership Worldwide	58

Photos: Jerusalem Foundation staff, Sasson Tiram, Perry Mendelboym, Elior Ben-Haim, Vadim Mikhailov.  
Information in this report is correct as of March 31, 2020.



An aerial photograph of Jerusalem, showing a mix of modern high-rise buildings and traditional stone structures, with green trees interspersed throughout the city. A semi-transparent white rectangular box is overlaid on the right side of the image, containing the text of the letter.

Dear Friends,

I am pleased to present you with the Jerusalem Foundation's 2019 Annual Report.

This report was prepared during an uncertain and unprecedented time in the world in which we have been focused on providing emergency support for the basic and immediate needs in the city of Jerusalem. The Jerusalem Foundation has always taken care of the people of Jerusalem and during this critical time, we do what we can to support the most vulnerable populations in the city and to preserve cross communal and cross cultural life in this city as a model for shared living for the rest of the world.

At the same time, it is important to look at what we have achieved over the past year as part of the mandate of the Jerusalem Foundation for the last 53 years and as a guide for long term planning for our continued work.

In 2019, friends of Jerusalem from around the world have once again come together to support this city and its people. This past year ended with many accomplishments, some of which were the result of years of work, but we also used this year for a process of development and thinking about the challenges ahead of us and directions for the efforts of the Jerusalem Foundation for the next decade, "Jerusalem 2030 and beyond".

Teddy Kollek, who founded the Jerusalem Foundation in 1966, had a vision for the city of Jerusalem as a model of multiculturalism, made up of different and unique communities who live together and share this city. His vision is more relevant now than ever. We look ahead to the next decade and beyond – with pride in the accomplishments of the Jerusalem Foundation – to the challenges that lie ahead and the new opportunities that are created from renewal and innovation. The Jerusalem Foundation will focus on three main areas of activity: Communal Strength, Creative Culture and Future Leadership. We continue to invest in capital projects that improve and enrich our beloved city, serving all neighborhoods according to their needs in accordance with our commitment to equality. We have built a relationship of trust



and cooperation with the Mayor of Jerusalem, Moshe Lion, while preserving our independence and vision and the Mayor has declared that the Jerusalem Foundation is the philanthropic arm of the city.

To realize our vision, we continue to strengthen our close partnerships with a broad range of institutions in Jerusalem, stakeholders and philanthropic agencies, academic institutions and policymakers, who are joining our hands-on long-term engagement in the city.

During 2019, we also welcomed James Snyder, as Executive Chairman of the Jerusalem Foundation INC in the United States. I have no doubt that his great experience and passion will be another significant factor in strengthening the Jerusalem Foundation and recruiting new and old friends to support the many tasks that lie ahead.

I am deeply grateful to our leadership around the world, our board members across continents and our chairs/presidents in each region, who keep Jerusalem in their hearts and are always there to offer support, guidance and friendship. I add a special congratulations to the Jerusalem Foundation UK Board and its Chairman, Lord Leigh, on celebrating 50 years of activity in the UK in 2019 and leading the way in philanthropic support for Jerusalem.

I personally have used the last year to study, to meet, to plan, to consult, to share, and also to promote and develop my first programs and projects along the way. I remain deeply honored to serve as President of this special Foundation and deeply grateful to our staff, volunteers, and friends who are helping to lead the Jerusalem Foundation on an exciting new path to future success and inspiration.

Shai Doron  
President





# LOOKING TO 2030 & BEYOND THE JERUSALEM FOUNDATION

## THE JERUSALEM FOUNDATION

### Looking to 2030 and Beyond

The Foundation was established over 50 years ago by the legendary Mayor of Jerusalem, Teddy Kollek. Over the last five decades, the Jerusalem Foundation has brought together friends from around the world to invest more than \$1.5 billion dollars in projects throughout the city. Since 1966, the Foundation has initiated, founded, created and managed over 4,000 projects - both capital and programmatic—in all neighborhoods of the city. This hands-on long-term involvement has effectively changed the face of modern Jerusalem and touched the lives of all of Jerusalem's diverse residents, now numbering over 900,000 people.

Today, the Jerusalem Foundation's original mandate is more relevant than ever. The Jerusalem Foundation has created a model for cross-cultural and cross-communal engagement among all of the population groups in the city. Looking forward, we have developed a plan for the next 10 years to ensure a better future for the city in 2030. As the leading institution in grant making for the cultural and communal sectors, our initiatives and projects promote communal strength, creative culture and future leadership.

As we envision the future of Jerusalem through 2030 and beyond, we can take pride in the Foundation's half-century of achievement that has shaped the modern city's landscape.

We continue to refine our priorities in order to support Jerusalem's future development, adapting to the evolving needs of its entire population, with its next generation as the highest priority. Taking full advantage of the unparalleled mix of historical, cultural, and human capital that exists in the city today, and consistent with Teddy Kollek's charge to each of us more than fifty years ago, philanthropy can be the essential catalyst to fulfilling this vision.

Join us in strengthening Jerusalem, an ancient city becoming a center for youthful creativity, innovation, inclusiveness and pluralism; an open city functioning as the civil society capital of Israel and the Jewish people; a livable city for young families; an inspiration to the world.





## Communal Strength

The Jerusalem Foundation ensures that Jerusalem's diverse residents can continue to build a modern, open and vibrant city together. With a special focus on the social and communal needs of the city's most vulnerable populations, we effectively strengthen the social fabric and community support systems of Jerusalem.



## Creative Culture

The Jerusalem Foundation leverages the city's diversity and unique history to shape its future as a modern, thriving metropolis by providing platforms for its varied populations to find expression through creativity. Creative initiatives breathe new life into the city, enhancing its vibrancy and openness, and ensuring that it continues to be a source of inspiration around the world.



## Future Leadership

The Jerusalem Foundation focuses on developing leadership and excellence in the city through its involvement in community activism and investment in the next generation. By promoting young civil leadership with a long term commitment to the city, and guaranteeing that all diverse communities have access to opportunities to excel, we safeguard the future.

# VISION & MISSION

## Vision

The Foundation seeks to shape the future of Jerusalem by investing in and creating a flourishing city as a source of inspiration for its people and the world.

## Mission

To shape a modern, open and vibrant city by creating communal strength for all Jerusalem residents; to identify and respond to the needs of Jerusalem, enhancing Jerusalem's contribution to people of all faiths, sharing the city with our partners and friends worldwide and inspiring new generations to take part in Jerusalem's future.

## Values

Relevant: initiating projects that matter

Transparent: utmost commitment to our donor initiator

Motivated: to improve lives









## COMMUNAL STRENGTH



The Jerusalem Foundation supports projects and programs for Jerusalem's most vulnerable populations, such as Holocaust survivors, senior citizens and residents of Jerusalem with special needs. By strengthening the city's support systems, we have an impact on thousands of people's lives, ensuring that Jerusalem's diverse residents can continue to build a modern, open and vibrant city together. The Jerusalem Foundation also supports projects which develop shared living in the city, creating meaningful bonds between communities, and bringing different groups together - Jews and Arabs, religious and secular, young and old.

*"Over the last decade,  
thanks to the Jerusalem  
Foundation, we have been  
expanding and enriching  
the quality of life of  
Jerusalem's Holocaust  
survivors. It is a privilege  
for us to provide the best  
service to them - thank you  
very much to the Jerusalem  
Foundation for your  
enormous assistance."*

Cafe Europa Club Manager





### **400 Holocaust survivors**



participate in weekly enrichment and social activities in "Cafe Europa" settings throughout the city

### **1000s of Jews and Arabs**



participated in special Jerusalem Day programming focusing on shared living (80 events in 36 hours)

### **100s of senior citizens**



from the Gilo neighborhood enjoyed a unique activity fair held at the local community center in June

### **6 gymborees**



were supported by the Early Childhood Association in east Jerusalem with each serving over 1,000 children annually

### **400 children**



participated in weekly "Classes in Nature" as part of the Springboard neighborhood improvement project

### **40 nurses**



from east Jerusalem have received child development vocational training

### **680 special needs children**



as well as struggling students and youth at risk assisted

### **7000 Ultra Orthodox boys**



exposed to STEM education activities

### **4000 students and 1300 teachers**



participated in cross-communal programming through the Learning Together program

### **More than 40 activities**



with over 800 participants are held weekly at the Beit Hofmann Senior Citizen Day Care Center, including physical exercise classes, lectures, workshops, and trips







## Achievements & Support 2019

- Springboard neighborhood improvement in Gilo and Kiryat Menachem
- Establishing the Jerusalem Foundation Shared Living Hub in our office building
- STEM programming for general population and ultra-Orthodox
- Alonim School
- Hattie Friedland School for the Deaf
- Sam and Ruthie Josefowitz (Rimonim) Kindergarten
- Yaelim for at-risk youth at Ein Yael
- Literacy programming, Mercaz Rachel and Yad Rachel
- Alcohol and drug prevention programming
- The Menachem Elyashar Elementary School
- Micha for the hearing impaired
- Beit Tamar for disabled youth
- Café Europa for Holocaust survivors



- Beit Hofmann Senior Citizen Day Care Center
- Beit Schweiz Senior Citizen Housing Center
- El-Jabsha Senior Center in Christian Quarter
- Reitman Senior Center in Canada House
- Abna Al Quds, Wadi Joz and Beit Hanina and Sur Baher Community Centers
- The Atta'a Assistance Center for the Rights of East Jerusalem Residents
- Mini-Active empowerment groups that improve neighborhood infrastructure
- Sur Baher Wellness Program for Women
- Language as a Cultural Bridge
- Learning Together in Jerusalem at the Museum for Islamic Art, the Bloomfield Science Museum and the Israel Tennis Center
- Runners without Borders, Jewish-Arab running club
- Hapoel Katamon Jewish-Arab Soccer Club Neighborhood League
- Beit-Alpert Jewish-Arab music center



*Participants in the CONNECT program for young olim supported by Christians for Israel Netherlands, at the Koschitzky Young Adult Center in Canada House*

*"The Jerusalem Foundation gives our students, who come from complex backgrounds, an opportunity for quality learning without compromising on the design of the space. Your confidence in and support of our school led to the Jerusalem Municipality also making a significant investment in renovating our music space."*

Tal Haim School Principal







- Speaking Hebrew (Lisan), teaching Hebrew to Arab women
- Renovation of the music room and English teaching space
  - a space that allows for experiential teaching of a foreign language from first grade - at Tal Haim School (formerly Hemed Ganim) in Kiryat Menachem.
- Start of construction for a new high school building for the Max Rayne Hand in Hand School for Bilingual Education
- Renovating the community center on Hapalmach Street to make it accessible
- Laying the cornerstone at the Polinsky Center for Vocational Training
- Communal outdoor library in Gilo
- The Tolerance Coalition conference
- Supporting community gardens across the city
- Renovation of a municipal kindergarten in Gilo



# Annual Support for Cross-Communal Anchor Institutions

The Jerusalem Intercultural Center

The Adam Institute for Democracy and Peace

The Tolerance Coalition

The Shared Living Hub

The Museum for Islamic Art

Max Rayne Hand in Hand School for Bilingual Education

Youth programming at the YMCA



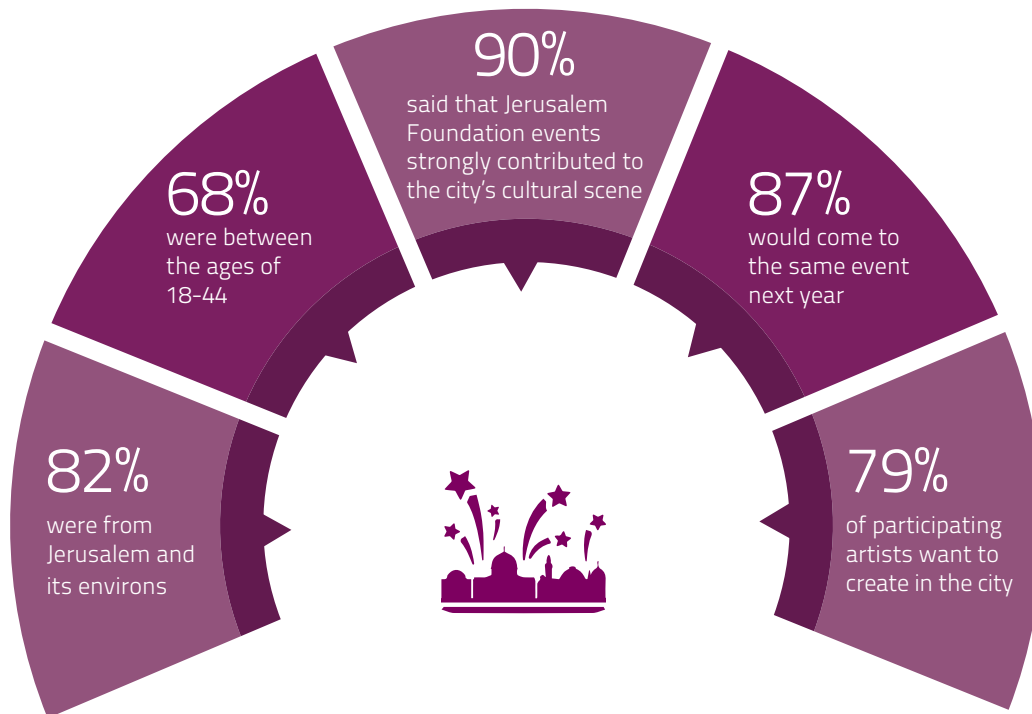


## CREATIVE CULTURE



The Jerusalem Foundation leverages the city's diversity and unique history to shape its future as a modern, thriving metropolis. Arts and culture breathe new life into the city, creating platforms for its vibrant mosaic of languages, perspectives and beliefs, and enhancing Jerusalem as a diverse, pluralistic city and a source of inspiration around the world. We support projects that foster innovative, entrepreneurial and original works in arts and culture, including inter-disciplinary and inter-organizational cooperative efforts, activities that build bridges between different communities, and event that advance place-making and promotion of arts and culture in the public sphere.

# Who Attends Cultural Events?







*"It is an asset for Jerusalem to have [an institution such as the Museum on the Seam], which promotes dialogue and coexistence while displaying the finest art available today."*

President Reuven Rivlin







## Number of Visitors 2019













## Achievements & Support 2019

- Supporting cutting-edge exhibitions at the Museum on the Seam – exhibitions presented thanks to our support enabled the museum to be officially recognized as a gallery by the Ministry of Culture
- The 7th International Writers Festival at Mishkenot Sha'ananim
- Musrara Mix Festival special placemaking event at Canada House's Inukshuk statue
- Renovating the Djanogly Art Gallery in Katamonim
- Making the Jerusalem Print Workshop accessible
- Renovating Niki de Saint Phalle's statues at The Tisch Family Zoological Gardens
- Establishing the Orient Express cafe and lounge at the Cinematheque

*"This lounge is  
what we have been  
waiting for,  
for many years!"*

Cinematheque patron





- Construction continues on the Davidson Theater, a new home for the Train Theater, to be completed by July, 2020
- Construction continues on renovations to the auditorium at the Paley Arts Center
- Turning the Montefiore Windmill complex into a tourist site
- Celebrating 30 years of the Tower of David museum
- Opening the new Orangutan exhibit at the Tisch Biblical Zoo
- Opening a public viewpoint on the roof of the MICHA building
- Architects' competition held for the new Jerusalem Conservatory Hassadna building, and winner chosen



## LIST OF SUPPORTED INSTITUTIONS



Art Cube Artists Studios | Bach Festival | Barbur Gallery | Bar Kayma | Beita  
Beit Hagat Gallery | Bloomfield Science Museum | Body, Dance, Place  
C.A.T.A.M.O.N. Dance Group | Djanogly Visual Arts Center | Hamazeka | Hamiffal  
International Festival of Puppet Theater | International Writers'  
Festival Israel Festival | Jerusalem Academy of Music & Dance  
Jazz Festival | Jerusalem Biennale | Jerusalem Cinematheque  
Jerusalem Conservatory Hassadna | Jerusalem International  
Film Festival & Film on the Go | Jerusalem Jewish Film Festival  
Jerusalem Music Center | Jerusalem Opera Festival  
Jerusalem Print Workshop | Jerusalem Street Orchestra  
Khan Theater | Maaleh School of Television, Film, & the Arts  
Machol Shalem Dance House | Machol Shalem International  
Dance Festival | Manofim Contemporary Art Festival  
Mashu Mashu Theater | Mekudeshet – Jerusalem Season of Culture  
Mikro Theatre | Mishkenot Sha'ananim | Museum for Islamic Art  
Jerusalem Academy of Music & Dance | Museum on the Seam  
Musrara, Naggar Multidisciplinary School of Art & Society | Muslala  
New Spirit | Nissan Nativ Acting School | Outline Festival  
Paley Arts Center | Pianists' Festival | Poetry Place | Sam Spiegel  
Film & Television School | School of Visual Theater | Studio Mi'shelach  
Tisch Family Zoological Gardens | To'Ar Art Shelter Gallery's Grafidos Festival  
Tower of David Museum | Train Theater | Yellow Submarine | Yemama Festival | 360 Festival





## FUTURE LEADERSHIP





The Jerusalem Foundation focuses on developing leadership and excellence in the city through its involvement in community activism and investment in the next generation. We provide funding and support to hundreds of students through scholarship programs, and create spaces for young people to develop skills and start their careers in Jerusalem. We safeguard the future by nurturing young civil leadership with a long term commitment to the city, and guaranteeing that all diverse communities have access to opportunities to excel.

*"Young entrepreneurs, who volunteer and invest their time to create communities, need support and the world of philanthropy can help such initiatives. The Jerusalem Foundation was the first to recognize the potential impact of such grassroots leadership on the city's economy. We are grateful for the Foundation's support of community leaders focused on economic development."*

Made in JLM CEO Roy Munin



**340 students at  
EdTech events**



6 academic institutions,  
23 elementary schools, 56  
volunteering students

**500**



higher education  
scholarships awarded at 13 higher  
education institutions

**25 institutions**



received voluntary support from  
scholarship awardees

**1500**



participants in over 100 events,  
workshops and delegations at the  
JLM.3k Hub



# Achievements & Support 2019

- Saul Hirschel Elementary School (Guatemala School) and Israel Academy for Sciences and Art
- Beita Mechanchim, connecting Jerusalem's innovation sector to solve the city's educational needs
- Infinity program for gifted underprivileged children
- Young Scientists Competition at the Bloomfield Science Museum
- Jerusalem Makers on Wheels Mobile Innovation Lab
- Ibdea School for Arts & Music in East Jerusalem
- Renovating the entrance in a Scouts troop headquarters
- Establishing the JLM.3k leaders hub in our office
- Dedication of a new youth club in Wadi Joz, East Jerusalem
- The Jerusalem Foundation Prize for Good Citizenship





*"The Ibdea School of the Arts was founded 3 years ago as the first school of arts in Arab society in Israel. Thanks to the Jerusalem Foundation's support, new and wonderful worlds have been opened to our students in the fields of art, cinema, music, theater, philosophy and more. We see the Jerusalem Foundation as a full partner in our efforts to promote the arts in Arab society."*

Melhem Bader,

Principal Ibdea School for the Arts



הקרן לירושלים  
مؤسسة صندوق القدس  
THE JERUSALEM FOUNDATION



הקרן לירושלים  
مؤسسة صندوق القدس  
THE JERUSALEM FOUNDATION





# THE JERUSALEM FOUNDATION CULTURE AND COMMUNITY FUND

As we envision the future of Jerusalem through 2030 and beyond, the Jerusalem Foundation has also chosen to increase public awareness about our activities in Jerusalem. By highlighting our commitment to projects that foster ties among Jerusalemites across social, cultural, and economic boundaries and showcase Jerusalem's global potential as an urban model for cross-communal life, we share our values with the people of Jerusalem.

These are some of the projects, which were included in 2019:

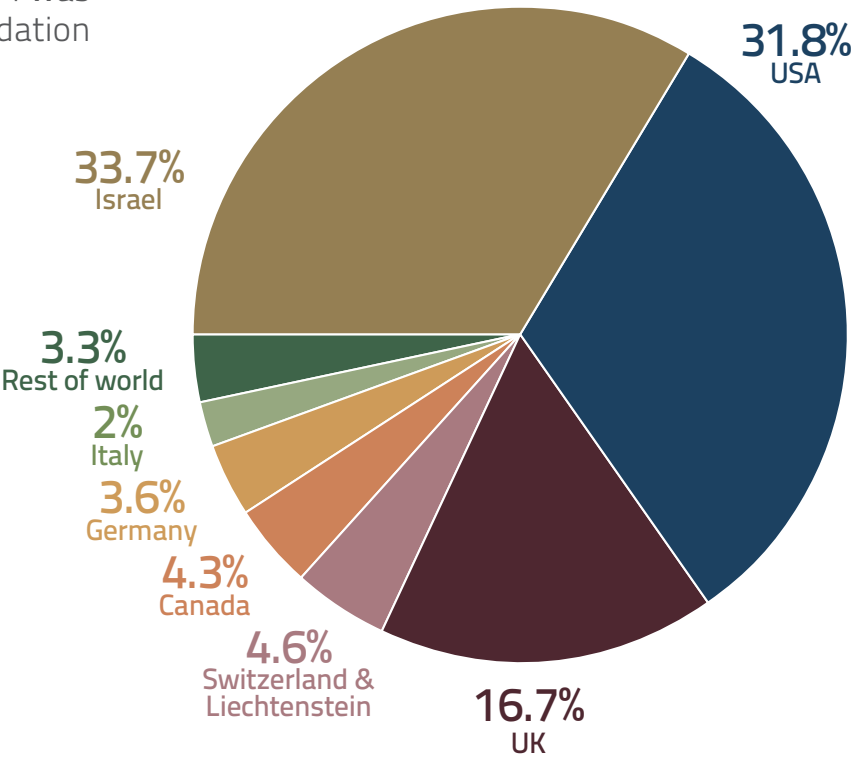
- Hapoel Katamon Soccer School
- Beitar Nordia Soccer School
- The 6th Jerusalem Jazz Festival
- Nights at the Bloomfield Science Museum
- Family Days at the Tisch Family Zoological Gardens
- Jerusalem Foundation box for at-risk youth at Hapoel Jerusalem Basketball games

# Financial Data 2019

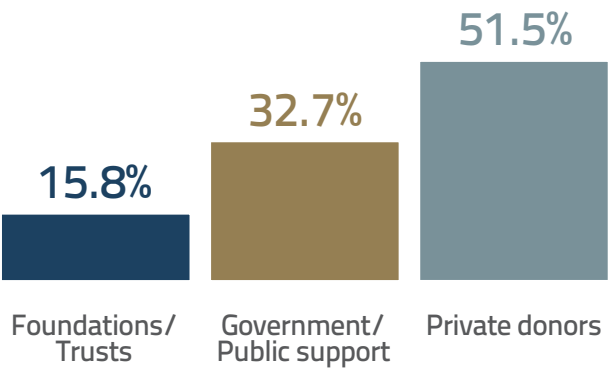
## Donations:

In 2019, a total of \$19,482, 504 was raised by the Jerusalem Foundation

Contributions by country

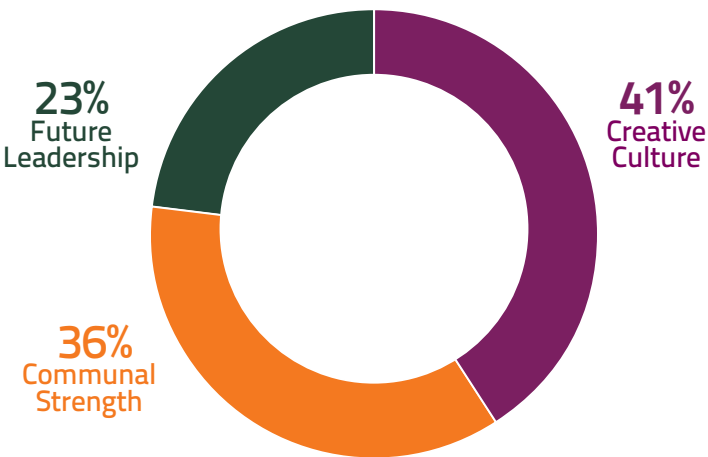


Contributions by type of donor



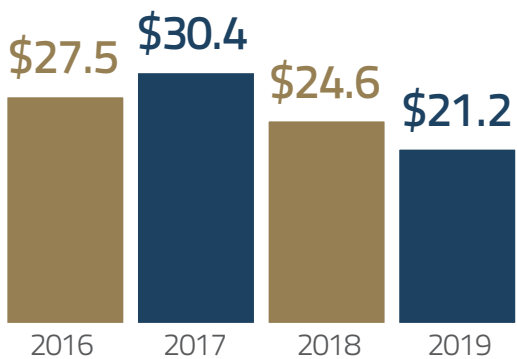
Allocations to Projects: \$21,194,833

Programming expenditure by category

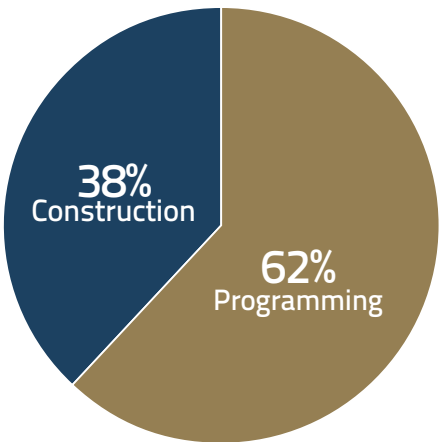


Allocations to Projects 2016 -2019

In millions of \$USD



Expenditure by type of project



\*The difference between contributions received and expenditures on project during any specified period of time – derives from: a) contributions received from endowment funds; b) time lapse between the receipt of funds and expenditure; and c) expenditure for administration and fundraising costs.





# Jerusalem Foundation Donors 2019

## Austria

Anonymous Donor

Christen an der Seite Israels - Österreich via

Marie-Louise Weissenböck (Vorsitzende)

Bundesministerium für Bildung,

Wissenschaft und Forschung

Keren Hajessod

## Canada

Amayan Charitable Foundation (David &

Sarena Koschitzky)

Asper Foundation

Pam & Paul Austin Family Foundation

Azrieli Foundation

Sharon & Ron Baruch

Leslie Beck

Nani & Austin Beutel

Bloomfield Family - Eldee Foundation

Binah Foundation

Lois & David Buckstein Family Foundation

Josh Burnett

Karen & Bruce Etherington

Kappy Flanders

Judith Finer-Freedman & Jeremy Freedman

DH Gales Family Charity Trust

Gewurz Family Foundation

David M. Golden

Morris & Rosalind Goodman Family Foundation

Milli Gould

Gary Grundman & Nancy Lerner

Agnes Herczeg

International Fellowship of Christians and

Jews of Canada

Dr. Noah Ivers

Dr. Suanne Kelman & Dr. Allan J. Fox

Carolyn Keystone & Jim Meekison

Julia & Henry Koschitzky

Mira & Saul Koschitzky

Krauss Family Charitable Trust

Michael Kuhl - Gitta Nishuma Foundation

Lorri Kushnir

Lederman Foundation

Joanna Sloane & Jules Lewy

David Lyons – Sir Jack Lyons Charitable Trust

Mayvon Foundation

Faye & Gordon Mimms

Lewis Mitz & Wendy Posluns

Barry & Esther Naiberg Family Foundation

Jewish Community Foundation of Montreal

Jewish National Fund of Canada

Posluns Family Foundation

Cyril & Dorothy, Joel & Jill Reitman Family

Foundation

Alvin Segal Family Foundation

Honey & Barry Sherman z"l (Apotex Foundation)

Randy Shiff

Neil Shore  
Judith Shostack  
Silver Family Foundation  
State Building Corporation  
Lawrence & Judith Tanenbaum Family  
Foundation  
The Ulmer Charitable Foundation  
James Van Bergh  
Gabi Weisfeld  
Benjamin Walker Foundation  
Kenneth Weiner  
Joe Wilder & Phyllis Pollock  
Robert Wright  
Leslie & Paul Wynn  
Atta & Henry Zieleniec

## **Euro-Asia**

Michael Kennefick  
Boris Sokol

## **France**

Marina & Sacha Nahmias

## **Germany**

Anonymous Donors  
Axel Springer Stiftung  
Berthold Leibinger Stiftung  
BMW Group  
Dr. Dr. Manfred Gentz und Ingrid Gentz  
Stiftung Hoffnung13

Stiftung Hoffnung geben – Zukunft leben,  
Daniel Müller und Freunde  
Familie von Holtzbrinck  
Karin von Holtzbrinck Stiftung  
Im Dialog. Evangelischer Arbeitskreis für das  
christlich-jüdische Gespräch in Hessen und  
Nassau  
Kind ohne Eltern-Walter Breitenstein-  
Stiftung  
North Rhine-Westphalia, PM Armin Laschet  
Pro Futura Stiftung, Michael und Diana  
Rathgeber  
Prof. Dr. Jan-Philipp Reemtsma, Hamburger  
Stiftung zur Förderung von Wissenschaft  
und Kultur  
Regine Sixt Kinderhilfe Stiftung „Tränchen  
trocknen“  
Volkswagen Aktiengesellschaft  
Sabine Westphal  
Würth Group

## **Israel**

Anonymous  
Doli Asayag  
Tamara and Nachum Barnea  
Ruth Cheshin  
Menache Elyashar LTD  
Freeman Family Foundation  
Jay and Renee Garfunkel  
Meir Heth

Gabriel Leibler  
Margalit Foundation  
Shachaf Foundation  
Tal Family

## **Israel – Public Institutions**

HaGihon Company (Jerusalem Regional Water)  
Israel Ministry of Jerusalem and Heritage  
Israel Nature and Parks Authority  
Jerusalem Development Authority (JDA)  
Jerusalem Municipality  
Keren Hayesod  
National Insurance Institute of Israel -  
Bituach Le'umi

## **Italy**

Associazione Italiana Jerusalem Foundation  
– ONLUS  
Fondazione Terzo Pilastro  
Goren Monti Ferrari Foundation  
Simone, Michael, Jacopo and Mirella Haggiag  
Paserman Leon and David  
Maria Teresa Venturini Fendi

## **Liechtenstein**

Anonymous Foundations  
Benecare Foundation  
Dan David Foundation

## **Norway**

Help Jews Home

## **Switzerland**

Anne Frank Fonds  
Anonymous via Josef Bollag  
Anonymous  
Hannah und Nadia Bär  
Georges und Jenny Bloch Stiftung  
Jetty, Aron und Simon Blum-Stiftung  
Stiftung Irene Bollag-Herzheimer  
Boner Stiftung für Kunst und Kultur  
Dr. Silvain Brunschwig Stiftung  
The DEAR Foundation, Sonja Dinner  
Diakonieverband Ländli  
Dr. Emile Dreyfus-Stiftung  
Isaac Dreyfus Bernheim Stiftung  
Albert und Madeleine Erlanger-Wyler  
Stiftung  
Saly Frommer Foundation  
Daniel Gablinger Stiftung  
Max und Erika Gideon Stiftung  
Hegenheim Immobilien AG, Menachem M.  
Goldmunz – Manager  
Dr. Georg und Josi Guggenheim-Stiftung  
The Helena Charitable Foundation  
Gerda Herz  
Hilfe für Blinde in Israel  
Kirschner-Loeb Stiftung  
Jonathon E. Lyons



Jan Lutz  
Merzbacher Kunststiftung  
Herbert Michel  
Adolf und Mary Mil-Stiftung  
MZR Gedenkstiftung  
Gretel und Walter Picard-Weil Stiftung  
Michael und Ellen Ringier  
S. + H. Rothschild Foundation  
Bernhard und Iris Schürmann  
Ruth und Paul Wallach Stiftung  
Lucie and Louis Weil-Bloch Foundation  
Wendepunkt Stiftung

## **The Netherlands**

Christenen voor Israel

## **United Kingdom**

Amberstone Trust  
Celia & Edward Atkin  
Gisela & Anthony Bloom  
Bluston Charitable Settlement  
Miel De Botton  
Ruth & Charles Corman Charitable Trust  
Davidson Family Charitable Trust  
Dent Family  
Sir Harry Djanogly  
Dorset Foundation  
Dame Vivien Duffield through the Clore Israel  
Foundation  
Eranda Rothschild Foundation

Exilarch's Foundation  
Fidelio Trust  
Amanda & Michael Goldstone  
Grantham Court Properties Ltd.  
Michelle & Jacques Gunsbourg  
Martine & Peter Halban  
Harei Yehuda Endowment Fund in Memory  
of Ivy Judah  
Humanitarian Trust  
Jerusalem Foundation UK Endowment Fund  
Anna Josse & David Lifton  
Kleinwort-Benson  
Kohn Foundation  
Sheila Koretz  
Lapid Trust  
Kennedy Leigh Charitable Trust  
Lord & Lady Leigh of Hurley  
Morris Leigh Foundation  
David & Ruth Lewis Family Charitable Trust  
Janice & Jack Livingstone  
Avril & Jonny Manson  
The Marks Family Trust  
Carolyn & Mark Mishon  
Aliza Moussaieff  
Hon. Marion & Guy Naggar  
NJD Charitable Trust  
Susan and Martin Paisner  
The Phillips and Rubens Charitable Trust  
The Estate of the Late George Pinto  
Edith & Ferdinand Porjes Charitable Trust

Rayne Trust  
Bianca & Stuart Roden  
Rosenfeld Family Charitable Trust  
Jill Samuels  
K.C. Shasha Charitable Foundation  
Sobell Foundation  
Deanne & Michael Steinberg  
Anabel and Joe Stelzer  
Joanne and Jacob Turner  
Linda & Michael Weinstein  
The Wohl Foundation  
Della & Fred Simon Worms, O.B.E.,  
Endowment Fund  
Yad Avi Hayishuv  
Debbie & Michael Ziff

## United States

Jean Ann Aldwell  
Cassie Arison  
Ted Arison Family Foundation  
David and Andi Arnovitz  
Bob Asher  
The Augustine Foundation  
Aviv Foundation  
Bader Philanthropies Inc.  
Frances Lewy Berg & Mark Berg  
Philip & Muriel Berman Foundation  
The Russell Berrie Foundation  
Jacob & Hilda Blaustein Fund  
Blum Family Foundation

The Alexander Bodini Foundation  
Robert Book  
David Bottoms  
Leila & David Centner  
Leon Constantiner  
Irving and Marjorie Cowan Family  
Foundation  
Arie & Ida Crown Memorial  
Crown Family Foundation  
The Crown Family  
Nathan Cummings Foundation  
Craig Emanuel  
Feldman Foundation TX  
Goldberg Charitable Trust  
Horace W. Goldsmith Foundation  
Alice Gottesman  
Alexander Grass Foundation  
Arieh Gratch  
Kathryn O. & Alan z"l Greenberg  
Moshe and Abby Greenberg  
Joseph Hanono  
Vivien and Alan Hassenfeld  
Hassenfeld Family Foundation  
Fenita Heyman  
Barbara F. Hines  
Leonard S. Hirsch  
Linda Jesselson  
Jewish Federation of Cleveland  
Jewish Federation of Northern New Jersey  
JNF USA

Marguerite Jossel Charitable Foundation  
The Karev Foundation  
Jordan Kassalow  
Knapp Family Foundation  
Ronald S. Lauder  
L.A.W Foundation  
Alice Edelman Lazoff & Mischa Lazoff  
Foundation  
Leichtag Foundation  
Leight Family  
The Leir Foundation  
Andrea and Michael Leven  
Estate of Peter Lowenthal  
Jonathan A. Margolis  
Patti Grabel & Isidore Mayrock  
Joseph and Harvey Meyerhoff Family  
Charitable Funds  
Milken Institute  
Ruth and Theodore N. Mirvis  
Dr. Roberta Gausas and Allen Model  
Leo Model Foundation  
Mojo Fund  
Rothberg Moskowitz  
Ostrovsky Family Fund  
William S. Paley Foundation  
Evgenia S. Peretz  
Jesse W. Peretz  
Martin Peretz  
Pershing Square Foundation  
Jay L. Pomrenze & Hadasa Pomrenze

Foundation  
Joe Pryzant  
The Bernard and Audre Rapoport Foundation  
David Recanati  
Erin and Craig Reicher  
The Righteous Persons Foundation  
Robin Family Fund  
Steven Rosenberg and Dr. Ellen Lippman  
Carol and Lawrence Saper  
Steven G. Scheinfeld  
Schiff Family Fund  
Herbert H. Schiff Foundation  
Shapiro-Silverberg Foundation  
The Schocken Foundation  
Bern Schwartz Family Foundation  
Beth & Joshua Schwartz  
Seed the Dream Foundation  
Helen Steyer  
Tommy & Simonetta Steyer Fund  
Merryl H. & James S. Tisch  
UJA-Federation of New York  
Ruthie and Herbert Wander  
Tova & Howard Weiser  
Irving S. Weinstein Philanthropic Fund  
Wilf Family Foundation  
Winnick Family Foundation





## LEGACIES, ENDOWMENTS AND BEQUESTS

Edward Agostini Revocable Trust  
Asher Bar Estate  
Eliezer & Lucie Behar Estate  
Elliot James Belkin Estate  
Arnold Bernhard Estate  
Leonard Bernstein Estate  
Nahum Bernstein Trust  
Georgia Bertcher Estate  
Herta Berthold Estate  
Anna Blauner Estate  
Blaustein Foundation  
Dr. Hanna Bogucka  
Ann Bregman Estate  
Ernest Bretter Estate  
Merle Cahn Trust  
Carolito Foundation  
Clark Estate  
Louis & Florence Cohen Philanthropic  
Foundation  
Albert Cuenca  
Jacob Davies Estate  
Marthe Deloire  
Mrs. De Stoutz Estate  
Eva Dukes Estates  
Louis Edelstein Estate  
Jehiel & Anna Elyachar  
Katherine Falk Estate  
Fidanque Fund  
Phil Fine Estate  
Mina Finkelstein Estate  
Augusta Fostel Estate  
Rachel Fridman Estate  
Phyllis Frey Estate

Saly Frommer Estate  
Harvey Furgatch Estate  
Nathane Fuller  
Nathan Galston Estate  
Rose Garfin Estate  
Edna & Oscar Gass Estate  
Dena Geschwind Estate  
Golden Era  
David Goldman Endowment  
Richard and Rhoda Goldman Family Fund  
Horace W. Goldsmith Foundation  
Israel Goldstein & Family  
Greta Goodman Estate  
M Goodman Endowment  
Jacob L. Greenberg Estate  
Jerome Gumenick Philanthropic Fund  
Charles Haar  
Gottlieb Hammer Estate  
Walter Hesselbach Fonds  
Regina Ilan Estate  
Augusta Kaye Estate  
J. Katz Fund  
William Kauders  
Miss Kate Kemper Estate  
Neomi (Monika) Kinzig  
Ruben Klamer  
Henry Kravis  
Krzepicki Estate  
Alice Lazoff Estate  
Norman M. Leff Fdn. Inc. Estate  
Legacy Heritage Fund Ltd.  
Leir Estate  
Gustave Levy Estate

Egon and Anna Libsch Foundation  
Mollie Parnis Livingstone Fund  
Loeb Foundation  
Martha J. Loewenstein  
Peter Lowenthal Estate  
Dora Lowin Estate  
Simone Mallah Estate  
Mandel Funds  
Magda Mayer Scholarship Fund  
Joseph M. Mazer Estate  
Lawrence Meinwald Estate  
Alice Menkes  
Jan Mitchell Fund  
Henry Montor Estate  
J Robert and Lynn Moskin  
Susan Myerson Estate  
Ostrovsky Family Fund  
Daniela Gechman Passal Estate  
Lillian Pavloff Estate  
Abraham Pekarsky Estate  
Fanny Penn Estate  
Jacob Perlow Estate  
George Pinto Estate  
Polinsky-Rivkin Family Foundation  
Sol Price Charitable Trust  
Margaret Richner  
Adele Singer Rifkind Fund  
Elfriede Kaethe Ritter  
Ralph Robbins Estate  
Selma Pilavin Robinson Estate  
Daniel and Joanna Rose Fund  
Dr. Miriam Freund Rosenthal  
Arthur Rubinstein Estate

Rubenstein Estate  
Salzberger Family  
Minnie Sasserath Estate  
Charles and Ruth Schapiro  
I. Meir Segals Estate  
Irene Sela  
Isidore & Helena Seibald Estate  
Reuben Shane Estate  
Esther Share Estate  
Ruth Silberberg Estate  
Ida Silverman Estate  
Rita Simon Estate  
John H. Slade Estate  
Leah Spanier Endowment Fund  
Spector Family Estate  
Sam Spiegel Estate  
Amalia Spiegelman Estate  
Louis & Bessie Stein Foundation  
Marie Syrkin Fellowship  
Tasman Estate, Norma L  
Jules Teitel Estate  
Esther Teitelbaum Estate  
Dr. Jurgen Thomas  
Treuhaft Foundation  
De Vorreuter Kusiel Estate  
Robert H. Weill  
Alice Weiss Estate  
Gordon B. Zacks Estate  
Ibrahim Zadeh Estate



## LEADERSHIP IN ISRAEL

### **Founder:**

Teddy Kollek z"l

### **President Emerita and Co-founder:**

Ruth Cheshin

### **Chairman of the Board of Directors:**

David Brodet

### **Board of Directors\*:**

Ronit Abramson

Zvi Agmon

Yoram Belizovsky

Tamar Ben-David

Ruth Cheshin

Alan Hassenfeld

Stuart Hershkowitz

Prof. Meir Heth

Gary Leibler

Sallai Meridor

Yohanna Arbib-Perugia

Dan Suesskind

Moshe Vidman

### **General Assembly:**

#### **International Chairman:**

Sallai Meridor

Yaron Angel

Avraham Asheri

Tamara Barnea

George Birenbaum

Dr. Moshe Eliash

Michael Federmann

Prof. Ruth Gavison

Martin Gerstel

Ruth Gorenstein

Peter Halban

Nechama Hillman

Richard Hirsch

Julia Koschitzky

Howard Leigh

Amos Mar-Haim

Lewis G. Mitz

Shlomit Molho

Jacob Ner-David

Doron Rechlevsky

Yaron Sadan

George Saman

Harry Sapir

Yoni Shimshoni

Ran Tuttnauer

Prof. Menachem Ya'ari

Amir Biram

Ehud Nisan

Mazal Tchorz

### **Israel Desk Director:**

Adit Barnett



## PROFESSIONAL STAFF IN ISRAEL

### **President**

Shai Doron

### **General Director**

Anat Tzur

### **Legal Advisor**

Lisa Avneri

### **Chief Financial Officer**

Yinon Oz-Ari

### **Chief Development Officer**

Nomi Yeshua

### **Director of Projects & Arts & Culture**

Ruth Diskin

### **Director of Construction & Planning**

Roi Singer

### **Chief Liaison Officer JF & Jerusalem Municipality**

Imry Ben Ami

### **Spokesperson**

Liat Rosner

### **Director of Donor Relations**

Nicole Wexler

(until Feb. 2020)

\*The Board of Directors are also members of the General Assembly







# LEADERSHIP WORLDWIDE

## AUSTRIA

### **Jerusalem Foundation (Österreich)**

Goldschmiedgasse 6,  
Türe 11  
A-1010 Wien  
Austria

Tel: 43-664-9112-286  
Fax: 43-1-9124-3864  
anfrage@jfjlm.org

### **President:**

Ambassador Dr. Peter  
Jankowitsch,  
Federal Minister, ret.

### **Vice Presidents:**

KR Dr. Klaus Liebscher  
Dr. Ariel Muzicant  
Dipl.-Ing. Rudolf Schicker  
Dr. Rudolf Scholten,  
Federal Minister, ret.

### **Treasurer:**

KR Adolf Wala

### **Secretary:**

Dr. Peter Pöch

### **Members:**

Shai Doron (ex officio)  
Gertraud Auer Boreo  
Dr. Daniel Charim  
Prof. Dr. Raoul Kneucker  
Dr. Emil Mezgolits  
Mag. Thomas Moskovics  
Günter Rhomberg  
H.E. Kardinal Dr. Christoph  
Schönborn  
Dr. Walter Schwimmer  
KR Victor Wagner

### **General Secretary:**

Mag. Philippe-Giuseppe  
Kupfer  
austria@jfjlm.org

### **German-Speaking Desk Director:**

Irène Pollak-Rein  
irenep@jfjlm.org

## CANADA

### **The Jerusalem Foundation of Canada**

National Office  
250 Consumers Road,  
Suite #301  
Toronto, Ontario M2J 4V6  
Toll Free: 1-877-484-1289  
Toronto: 416-922-0000  
Montreal: 514-484-1289

### **President:**

Lewis R. Mitz

### **Immediate Past President:**

Julia Koschitzky, C.M.

### **Honorary Presidents:**

David J. Azrieli, C.M., C.Q., M.  
Arch., z"l  
Manuel G. Batshaw, C.M.,  
C.Q., z"l  
Charles R. Bronfman, P.C.,  
C.C., L.L.D.  
Elaine Goldstein

### **Vice President:**

Joel Reitman

### **Secretary:**

David M. Golden

### **Treasurer:**

Gary Grundman

### **Members of the Board:**

Ralph Bénatar  
David Berger  
Harry J. F. Bloomfield, Q.C.  
Ariela Cotler  
Heather Fenyes  
Jeremy Freedman  
Dr. Sara Horowitz  
Sarah Krauss  
Lorri Kushnir  
David Lyons  
Connie Putterman

David C. Rosenbaum  
Evelyn Bloomfield Schachter  
Judy Shostack  
Doron Telem  
Joseph J. Wilder, Q.C.  
Paul Wynn

**Honourary Board Members:**

Charles Coffey, O.C.  
Senator Art Eggleton  
Senator Linda Frum  
Gina Godfrey  
The Hon. Yoine Goldstein  
Harry Gorman  
Moshe Safdie  
Isadore Sharp

**National Executive Director  
Canada:**

Robin Gofine, LL.B, MSW  
rgofine@jerusalemfoundation.ca

**Canada Desk Director:**

Nomi Yeshua  
nomiy@jfjlm.org

## **EURO-ASIA**

**The Jerusalem Foundation  
Euro-Asia Desk**

POB 10185  
Jerusalem  
91101  
Tel: +972-2-675-1752

**Jerusalem Foundation  
Ukraine Chairman:**  
Michael Feldman

**Jerusalem Foundation Russia  
Members of the Board:**

Prof. Yuri Buziashvili  
Rabbi Pinchas Goldschmidt  
Evgeny Kagan  
Prof. Gregory Roytberg  
Yakov Soskin  
Ralph Vaintrub

**Euro-Asia - Muslim and  
Christian Communities:**  
Avraam Shilman

## **GERMANY**

**Jerusalem Foundation  
Deutschland e.V.**

Postfach 38 02 25  
D-14112 Berlin Germany  
Tel: 49-30-8010-5890  
info@jfd-berlin.de

**First Chairman:**  
Volker Bouffier,  
Prime Minister of Hesse

**Second Chairman:**  
Torsten Albig,  
Prime Minister of Schleswig-  
Holstein, ret.

**Treasurer:**  
Anke Eymer

**Members:**

Axel Springer SE  
HRH Bernhard Prince of  
Baden  
Daimler AG  
Albert Darboven  
Shai Doron  
Rudolf Dressler,  
Ambassador, ret.  
Dr. Christian Ehler, Member  
of the  
European Parliament  
Hans Eichel, Federal  
Minister, ret.,  
Prime Minister of Hesse, ret.  
Dr. jur. Dr. rer. oec. h.c.  
Manfred Gentz  
Dr. h.c. Johannes Gerster  
Dr. jur. Stephan J. Holthoff-  
Pförtner, Minister  
Dr. Michael J. Inacker  
Dr. h.c. Charlotte Knobloch,  
President of the Jewish  
Community of Munich and  
Upper Bavaria  
Prof. Roland Koch, Prime  
Minister of Hesse, ret.  
Dr. Christine Kreiner  
Winfried Kretschmann,  
Prime Minister of Baden-  
Wuerttemberg

Michael Kretschmer, Prime Minister of the Free State of Saxony  
 Armin Laschet, Prime Minister of North Rhine-Westphalia  
 Dr. phil. Nicola Leibinger-Kammüller  
 Brigitte Lichtenauer-Blumenfeld  
 Dr. Peter Linder, Honorary Consul General of the Grand Duchy of Luxembourg  
 Reinhard Meier  
 Liz Mohn  
 Ralph Müller-Beck, State Secretary, ret.  
 Dr. Volker Pannen, Mayor of Bad Bentheim  
 Herbert Pfennig  
 Matthias Platzeck, Prime Minister of Brandenburg, ret.  
 Dr. Elisabeth Preuß, Mayor of Erlangen  
 Prof. Dr. Jürgen Rüttgers, Prime Minister of North Rhine-Westphalia, ret.  
 Prof. Dr. h.c. mult. Annette Schavan, Federal Minister ret.  
 André Schmitz, State Secretary of Culture, ret.  
 Ingo Senftleben, Member of Parliament  
 Prof. Dr. Dr. h.c. Bernhard

Servatius  
 Sixt SE  
 Dr. Markus Söder, Prime Minister of Bavaria  
 Dr. h.c. Friede Springer  
 Florian Streibl, Floor Leader, Bavarian Parliament  
 Prof. Dr. Rita Süßmuth, President of the Bundestag, ret., Federal Minister, ret.  
 Prof. Dr. h.c. Erwin Teufel, Prime Minister of Baden-Wuerttemberg, ret.  
 Prof. Dr. Bernhard Vogel, Prime Minister of Rhineland-Palatinate, ret., Prime Minister of the Free State of Thuringia, ret.  
 Prof. Dr. Dr. h.c. Werner Weidenfeld  
 Dieter Weiland  
 Adriano Winkler

#### **National Director Germany:**

Gabriele Appel  
[gabrielea@jfjlm.org](mailto:gabrielea@jfjlm.org)

#### **Executive Director:**

Hildegard Radhauer  
[info@jfd-berlin.de](mailto:info@jfd-berlin.de)

#### **German-Speaking Desk Director:**

Irène Pollak-Rein  
[irenep@jfjlm.org](mailto:irenep@jfjlm.org)

## **ITALY**

### **Associazione Italiana Jerusalem**

Foundation – ONLUS  
 Via Francesco Siacci, 6  
 00197 Roma  
 Italy

#### **Honorary Chairman:**

Mirella Petteni Haggiag

#### **Chairmen:**

Ermanno Tedeschi  
 Vivien Buaron

#### **Members:**

Giorgio Cannariato  
 Gabriella Cecchi  
 Iole De Blasio  
 Claudia Dwek  
 Ginevra Elkann Gaetani  
 Cherie Fadlun  
 Anna Fendi  
 Sabina Florio  
 Micaela Goren Monti  
 Lorenza Jona Celesia  
 Tamar Millo  
 Mirella Petteni Haggiag  
 Fabio Alberto Regoli  
 Virginia Ripa di Meana  
 Maria Teresa Venturini Fendi

#### **Italy Desk Director:**

Tamar Millo  
[tamarm@jfjlm.org](mailto:tamarm@jfjlm.org)

## SPAIN

### **The Jerusalem Foundation Spain**

Montalban 9, Bajo izq.  
Madrid, Spain 28014  
Tel: +34+91-524-1123

#### **President:**

León Benelbas

#### **Members:**

Sophie Chetrit  
Arie Zehavi  
Anat Tzur

## SWITZERLAND

### **Jerusalem Foundation Switzerland**

c/o Budliger Treuhand AG  
PO Box 1564  
CH-8027 Zürich  
Tel: 41-44-289-45-45  
Fax: 41-44-289-45-99  
anfrage@jfjlm.org

#### **President:**

e. NR Hans-Ulrich Bigler

#### **Treasurer:**

Dr. Evelyn Teitler

#### **Members:**

Shai Doron (ex officio)  
Josef (Ueli) Bollag  
Erika Gideon-Wyler

Dr. Michael Rabner  
Dr. Ruth Bloch-Riemer  
Jizchak Schächter  
Peter Vollenweider  
Anita Winter

### **German-Speaking Desk**

#### **Director:**

Irène Pollak-Rein  
irenep@jfjlm.org

## UNITED KINGDOM

### **The Jerusalem Foundation**

Administered by Prism the  
Gift Fund  
20 Gloucester Place  
W1U 8HA  
London UK  
Tel: 44-020-7009-9649

#### **Chairman:**

Lord Leigh of Hurley

#### **Founder:**

Leslie Paisner z"l

#### **Treasurer:**

Joanne Turner

### **Executive Board and**

#### **Trustees:**

Dame Vivien Duffield DBE  
Lord Leigh of Hurley  
Jack Livingstone, OBE  
Carolyn Mishon  
Guy Naggar

Martin Paisner, CBE  
Michael Rosenfeld  
Deanne Steinberg  
Joanne Turner

### **Advisory committee:**

Peter Halban  
Ninette Perahia  
The Hon. Robert Rayne  
Anthony Rosenfelder  
Rachel Sopher  
Adam Spiegel  
Lady Annabelle Weidenfeld  
Lord Woolf  
Dr. Michael Ziff

### **UK National Director:**

Susan Winton  
susanw@jfjlm.org

### **UK Desk Director:**

Neil Greenbaum  
neilg@jfjlm.org



## UNITED STATES

### **The Jerusalem Foundation Inc.**

420 Lexington Avenue, Suite  
1645

New York, NY 10170

Tel: 212-6974188

Fax: 212-697-4022

### **Chairman:**

Alan G. Hassenfeld

### **Executive Chairman:**

James S. Snyder

### **Secretary/Treasurer:**

Stephen R. Reiner

### **General Counsel:**

Steven G. Scheinfeld, Esq.

### **Members:**

Isaac Applbaum

Cassie Arison

David Bottoms

Susan Block Casdin

Daniel Crown

Lester Crown

Linda Jesselson

Dr. Jordan Kassalow

Nathan Leight

Rabbi Joy Levitt

Isidore Mayrock

Theodore Mirvis

Allen Model

Amb. Lyndon Olson, Jr.

David Recanati

Craig Reicher

John Shapiro

Herbert Wander, Esq.

### **Executive Director:**

Joe Nadis

[jnadis@jfoundation.com](mailto:jnadis@jfoundation.com)



