



THE JERUSALEM FOUNDATION

مؤسسة صندوق القدس

הקרן לירושלים



Annual Report



# CONTENTS

From the President	4
About the Jerusalem Foundation	7
A Challenging Year	8
Communal Strength	12
Creative Culture	20
Future Leadership	30
Financial Data 2020	36
Donors	38
Legacies & Endowments	44
Leadership in Israel	46
Professional Staff in Israel	46
Leadership Worldwide	47

# PHOTOS

Shlomi Cohen, Perry Mendelboym, Vadim Mikhailov, Natasha Shachnes, Sasson Tiram, Jerusalem Foundation staff, photos from Jerusalem Foundation projects

\* Information in this report is correct as of March 31, 2021



DEAR FRIENDS,

I am pleased to present the Jerusalem Foundation's 2020 Annual Report.

The Jerusalem Foundation has always assisted and empowered the people of Jerusalem, and during this challenging and unprecedented year we continued to support the most vulnerable populations in all parts of the city. In many ways these challenges also proved to be opportunities, as the Jerusalem Foundation played a key role in coordinating large-scale efforts to respond to the city's needs and was recognized as an indispensable partner.

One of The Jerusalem Foundation's greatest strengths is our ability to respond immediately to changing realities and at the same time to continue to advance our long-term vision. I am proud that this year we responded quickly to immediate and urgent needs in the face of the pandemic. Thanks to support from longtime friends and new donors all over the world, we allocated more than 9 million NIS for emergency relief. Our response to the pandemic helped us to better understand the needs in the city, and new initiatives were born of the crisis.

The Jerusalem Foundation provided a safety net for the most vulnerable people in Jerusalem and preserved the arts and culture eco-system during the lock down. At the same time, we continued to advance the long term projects securing the future of the city through the 'Jerusalem 2030' Master Plan in the areas of Communal Strength, Creative Culture and Future Leadership.

In the midst of all the challenges of 2020, the Foundation also celebrated a long list of accomplishments with both capital projects and programming. Several highlights included: purchasing the Shanti House for youth at risk; breaking ground on a day center for the elderly of the ultra-Orthodox community; nearing completion of construction on the Davidson Theater, home to the Train Theater in Liberty Bell Park, and a new High School building for the Max Rayne Hand in Hand School for Bilingual Education; creating several libraries in east Jerusalem schools; and renovating the community center on Palmach Street and the auditorium at the Paley Center for the Arts in east Jerusalem.

We launched two of our own future leadership programs with the George Pinto Jerusalem Leadership Fellows and the initiative for youth leaders from disadvantaged neighborhoods. We expanded the cutting-edge Al Mada science and math program and the Learning Together Shared Living program for principals, teachers and students from all the city's sectors.

The Jerusalem Foundation in the USA was inspired to create the Community and Culture Innovation Fund for relief and recovery to support innovative and collaborative culture and community projects during COVID and beyond. We launched the \$1.25 million fund at the end of 2020, over 180 cultural and community organizations submitted applications and grants were awarded to 45 organizations that have already begun to realize their diverse groundbreaking projects.

We also used the year to plan, promote and raise resources for significant projects that will be implemented in the coming years, including the Gazelle Valley Education Center, the new Marcus Margulies Pavilion at the Jerusalem Botanical Gardens, the Hassadna Music Conservatory and dozens of other projects for the benefit of all the city's residents.

Our cooperation, coordination and close collaboration with Mayor Moshe Lion and the Municipal departments was strengthened even further in 2020 and continues to be a strategic asset in the work of the Jerusalem Foundation. In many cases this has led to leveraging additional public funding to match support raised by the Jerusalem Foundation from around the world and greatly benefited the programs and projects we initiate and advance.

2020 ended with a significant increase in funds raised by the Jerusalem Foundation - \$29,941,154 from our supporters around the world - an impressive increase of over 30% compared to 2019. We all hope to sustain the momentum in 2021, and we continue to work in partnership with the boards and professionals of The Jerusalem Foundation around the world to reach our goals.

I want to thank all of our friends and supporters around the globe who kept Jerusalem in their hearts despite local responsibilities and personal challenges.

It has been much too long since we could welcome you to Jerusalem in person, and I am counting the days until we see you here in 2021, "this year in Jerusalem".

Shai Doron,  
President





# ABOUT THE JERUSALEM FOUNDATION

The Jerusalem Foundation was established in 1966 by the legendary Mayor of Jerusalem, Teddy Kollek. Over the last five decades, and through more than 4000 initiatives, the Foundation has touched the lives of all of Jerusalem’s more than 900,000 residents from all of the city’s communities.

Today, the Jerusalem Foundation’s mandate is as relevant as ever. The global pandemic, which resulted in a health and economic crisis, has impacted us all and has brought into sharper focus some of the existing issues in Jerusalem. The social fabric of the city has been tested and challenged, and the need for communal strength is more pressing than ever. Our plan for 2030 will close social gaps and support the most vulnerable populations in the city.

The pandemic impacted cultural life in Jerusalem. Going forward, we will continue to promote creative culture, supporting cultural institutions to innovate and adapt to the new reality. The future of Jerusalem will be determined by its young leaders and we continue to support the development of the next generation in the city. We can take pride in the Foundation’s half-century of achievement that has shaped the modern city’s landscape even as we continue to adapt to the evolving needs of Jerusalem’s diverse population and invest in its development.

## VISION

The Foundation seeks to shape the future of Jerusalem by investing in and creating a flourishing city as a source of inspiration for its people and the world.

## MISSION

To shape a modern, open and vibrant city by creating communal strength for all Jerusalem residents; to identify and respond to the needs of Jerusalem, enhancing Jerusalem's contribution to people of all faiths, sharing the city with our partners and friends worldwide and inspiring new generations to take part in Jerusalem’s future.



## A CHALLENGING YEAR

Like the rest of the world, Israel was hit hard by Covid in 2020.

And Jerusalem, like the rest of the country, faced unprecedented difficulties in dealing with the pandemic and its effects. Throughout the year, the Jerusalem Foundation rose to the challenge and was able to find innovative ways to strengthen the city and its residents.

In response to the health, social and economic crisis, the Jerusalem Foundation worked to provide essential emergency support to thousands of Jerusalem's most vulnerable residents from all populations in the city. In coordination with Mayor Moshe Lion and the Jerusalem Municipality, and together with many other partners, we have been at the forefront of the city's response to the ongoing pandemic, providing a vital safety net to those most in need.

- We provided thousands of food parcels to Holocaust survivors, the elderly, and needy families in west and east Jerusalem – 1.6 million shekels
- We supported children's homes, youth at risk, and other children and young adults in need – 630,000 shekels
- We supported children and adults with special needs and physical or cognitive disabilities, providing them with tablet computers, special programming and extra care – 1.7 million shekels
- We helped elderly residents access the support they needed, and provided them with tablet computers to battle the loneliness they faced. We also supported women in women's shelters and refugees, who faced unique challenges during the pandemic – 975,000 shekels
- We distributed special packages to medical teams on the front lines, including gifts before Passover and gifts to MDA teams in east Jerusalem for Ramadan – 260,000 shekels



We also launched a variety of support for the city's arts and culture community to help them during 2020 and ensure that creative culture and civil society would be able to recover from this unprecedented shutdown of activity. We put a particular emphasis on developing collaborative partnerships between cultural groups and nurturing innovative new models and creative solutions to the restrictions and lockdowns.

## Amongst the projects we supported were:

- The Khan Theater's outdoor performances which were compliant with restrictions, including performances in the streets of Yemin Moshe
- The annual Jerusalem Jazz Festival joined with the Israel Festival to create special outdoor performances, including in the sculpture garden of the Israel Museum
- 'Oxygen for Culture' events - small-scale events taking place in people's private homes and gardens and being live-streamed to wider audiences on social media
- Special scholarship funding for students impacted by the pandemic from five art schools - The School of Visual Theater, the Jerusalem Sam Spiegel Film School, the Ma'aleh School of Film and Television, the Naggar School of Art and Society (Musrara), and the Nissan Nativ Acting Studio

## In 2020:

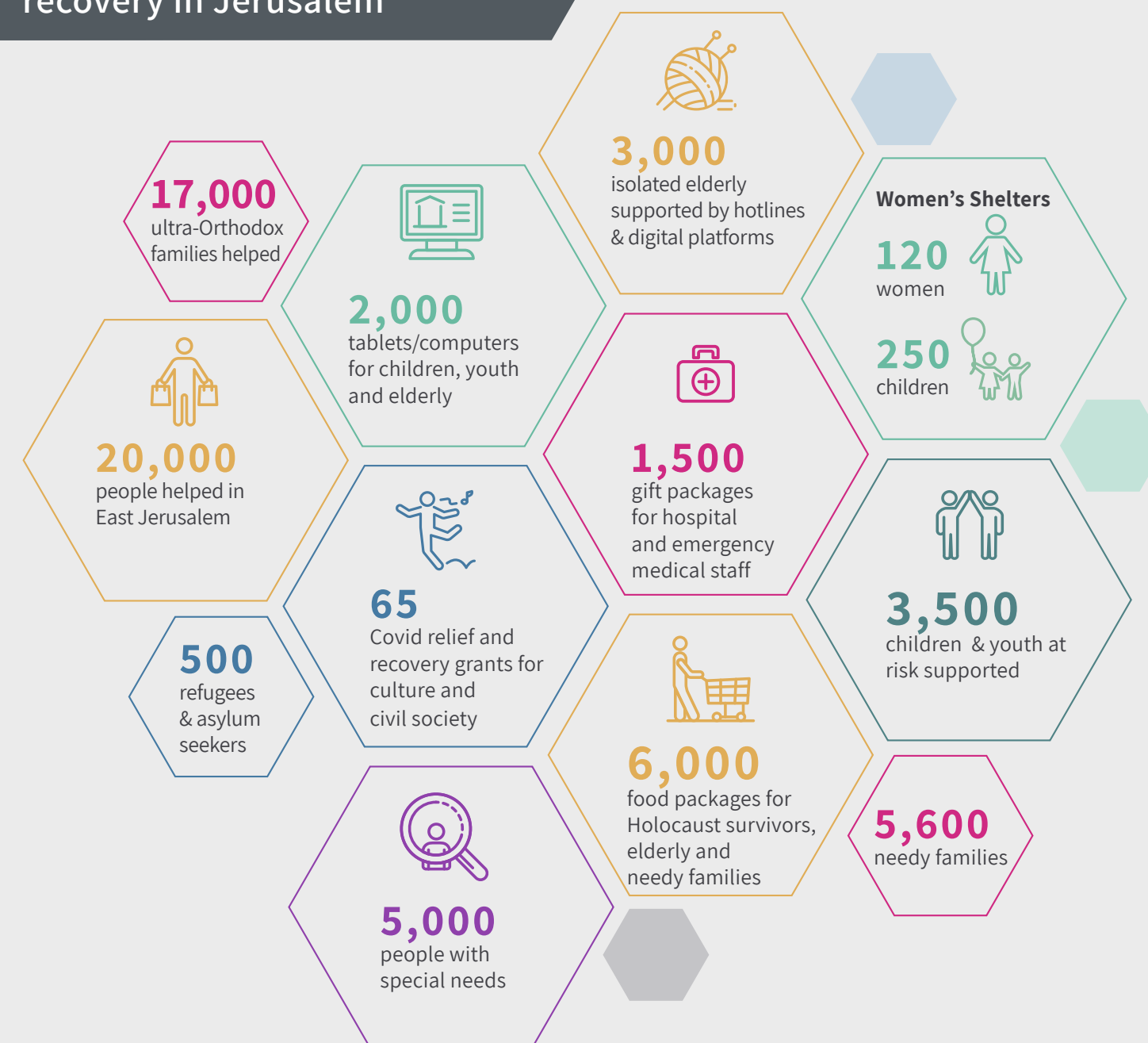
- 3.6 million shekels were distributed to support the recovery of arts, culture and civil society
- 40 cultural institutions and civil society organizations received grants to get them back on their feet and adapt to restrictions and the new "normal"
- 1.5 million shekels were distributed to arts and culture organizations through interest-free loans, in partnership with Ogen

The Jerusalem Foundation **Community and Culture Innovation Fund**, supported by the Jerusalem Foundation Inc. in the USA, was launched in October, awarding 45 grants totaling more than \$1.2 million which will ensure Jerusalem's future vitality by encouraging institutions and organizations across the city to create innovative models for navigating these unprecedented times and flourishing afterward.

## In 2020, 8.8 million NIS was distributed for Covid relief and recovery in Jerusalem



THE JERUSALEM FOUNDATION  
مؤسسة صندوق القدس  
הקרן לירושלים





"I am so impressed with Al-Mada, an innovative science and math teachers training program. The learning units are incredibly creative, changing how teachers teach and making these subjects more enjoyable and educational for the students."

EAST JERUSALEM SCIENCE  
TEACHER AND PROGRAM  
COORDINATOR



## COMMUNAL STRENGTH

The Jerusalem Foundation supports projects and programs for Jerusalem's most vulnerable populations, including Holocaust survivors, senior citizens and residents of Jerusalem with special needs. By strengthening the city's support systems and communal networks, we have an impact on thousands of people's lives, closing social gaps that have been exacerbated in recent times. The Jerusalem Foundation also supports projects which develop shared living in the city, using Jerusalem's diversity as an asset and creating meaningful bonds between communities by bringing different groups together - Jews and Arabs, religious and secular, young and old.



"We are incredibly grateful to the Jerusalem Foundation for supporting the establishment of the Hirbet Arza outdoor activity center, a unique and innovative learning center promoting environmental values."

PROJECT SPRINGBOARD  
COORDINATOR



## ACHIEVEMENTS & SUPPORT 2020

- 'A Home for Every Child' (Bayit L'Kol Yeled - 'BiLY')
- Abna Al Quds, Wadi el Joz, Beit Hanina and Sur Baher Community Centers
- Al Mada teacher training for STEM education in schools
- Alcohol and drug prevention programming
- Alonim School for children with special needs
- Atta'a Center for Exercising Rights of East Jerusalem Residents
- Beit Finger - Grabski community rehabilitation center
- Beit Hofmann Senior Citizen Day Care Center
- Beit Schweiz Senior Citizen Housing Center
- Beit Tamar for severely disabled children
- Beit-Alpert Jewish-Arab Music Center
- Beita Mechanchim, connecting Jerusalem's innovation sector to solve the city's educational needs
- Beitar Nordia Soccer School
- Byer Home for the Aged
- Café Europa for Holocaust Survivors
- Canada House – Gorman-Shore Learning Center, Reitman Elderly Center, Koschitzky Young Adult Center
- Close-to-Home Women's Business Entrepreneurship Incubator



- Communal outdoor library in Nayot and Rassco
- Community gardens across the city
- 'Connect Jerusalem' at Canada House – support for young immigrants (olim) in Jerusalem
- El-Jabsha Senior Center in Christian Quarter
- Hapoel Katamon Jewish-Arab Soccer Club Neighborhood League
- Hattie Friedland School for the Deaf
- Ibdaa School for the Arts & Music
- Woman to Woman Shelter for Women at Risk
- Jerusalem African Community Center – supporting refugees and asylum seekers
- Jerusalem Foundation Shared Living Hub and Tolerance Coalition
- Jerusalem Makers on Wheels
- Ken LaZaken – assisting the elderly in exercising rights
- Language as a Cultural Bridge
- Learning Together in Jerusalem at the Museum for Islamic Art, the Bloomfield Science Museum, Israel Education and Tennis Centers and more
- Literacy programming for early childhood development - Merkaz Rachel & Yad Rachel
- Melabev community care for people living with dementia and Alzheimer's
- Menachem Elyashar Elementary School
- Micha Center for the hearing impaired
- Mini-Active empowerment groups that improve neighborhood infrastructure
- Misholim – activities for children with emotional and behavioral challenges
- Mobile Innovation Lab

- Runners without Borders, Jewish-Arab running club
- Sam and Ruthie (Rimonim) Kindergarten
- Saul Hirschel Elementary School and the Israel Arts & Science Academy
- Scholarships for children from disadvantaged neighborhoods at the Hapoel Jerusalem basketball school
- Shekel – Tony Elyashar Center for children & adults with special needs
- Speaking Hebrew (Lisan), teaching Hebrew to Arab women
- Springboard neighborhood improvement in Gilo and Kiryat Menachem
- STEM education for general and ultra-Orthodox populations
- Sur Baher Wellness Program
- Swimming Together - joint Jewish-Arab swimming team
- Tisch Family Zoological Gardens - disadvantaged youth visits
- Yaelim for at-risk youth at Ein Yael in Beit Neri
- Young Neighborhoods Project in Gilo, Kiryat Menachem and Kiryat Yovel





## CAPITAL PROJECTS

- Kindergarten in Gilo, renovated by Daniel Müller and friends
- Gazelle Valley Urban Wildlife Park - new seating area and vineyard
- Palmach Street Community Center
- Wohl Rose Park – Zurich Plaza
- School Science Labs and Library in Sur Baher School
- Library in Ibdaa School for the Arts & Music
- Beit Hashanti - purchase of a building in Ein Kerem for Beit Hashanti, for at-risk youth

## ANNUAL SUPPORT FOR CROSS-COMMUNAL ANCHOR INSTITUTIONS

- Jerusalem Intercultural Center
- The Adam Institute for Democracy and Peace
- The Tolerance Coalition
- The Shared Living Hub
- The Museum for Islamic Art
- Max Rayne Hand in Hand School for Bilingual Education
- Youth programming at the Jerusalem International YMCA







## CREATIVE CULTURE

The Jerusalem Foundation leverages the city's diversity and unique history to shape its future as a modern, thriving center of arts and culture. We support projects that foster innovation and cooperation between organizations and varied art forms, and events that build bridges between Jerusalem's diverse communities. We support cultural institutions in their efforts to create innovative new models for culture and adapt to changing realities, breathing new life into Jerusalem. Despite a challenging year, we helped Jerusalem's cultural sector to weather the storm and nurture innovation which will strengthen the arts and culture in the city.

"Our new home at HaParsa (former Rav Hen cinema) enables us to significantly expand the scope of our activities, including rehearsals, school activities, producing shows, hosting other troupes and collaborating with our partners. "

RONEN ITZHAKI, MANAGER OF BETWEEN HEAVEN AND EARTH DANCE COMPANY, ONE OF THREE PARTNER ORGANIZATIONS IN HAPARSA





## ACHIEVEMENTS & SUPPORT 2020

- 7th International Writers Festival at Mishkenot Sha'ananim
- A Studio of Her Own - closing exhibition of Women Leadership in Culture Project
- Artists' Studios 'Space Log', the new time capsule
- Bach in Jerusalem Festival, by the Jerusalem Baroque Orchestra
- Balanced Power – a performance of dancers with mixed abilities by the Vertigo Dance Company
- Barbur Gallery - exhibitions and installations
- Beita Gallery held art exhibitions and tours on the streets of Jerusalem, in partnership with the Jerusalem Municipality Plastic Art Division
- HaMazkeka Radio and ZIKUK.TV at HaMazkeka Center For Contemporary And Interdisciplinary Art
- HaParsa, a new culture center at the old Rav Hen cinema, launched as a home to three leading cultural institutions – Between Heaven and Earth, HaZira Interdisciplinary Center and the Machol Shalem Dance Company
- HaZira Interdisciplinary Center - 'Desperate Housewives' online series of video art performances
- International Music Showcase Festival held online by the Yellow Submarine
- Jerusalem Botanical Gardens - 'Returning to Nature' exhibition



- Jerusalem Dance Theater School - online digital lessons and recitals
- Jerusalem Film Festival - prizes sponsored by the Jerusalem Foundation:
  - The Haggiag Award for Best Israeli Feature Film was awarded to Dani Rosenberg's *The Death of Cinema and My Father Too*
  - The winner of the Nechama Rivlin International Competition was Valentyn Vasyanovych's *Atlantis*
- Jerusalem Jewish Film Festival
- Jerusalem Music Center - chamber ensembles by the Young Israel Philharmonic Orchestra
- Jerusalem Theater - free culture and arts activities in the summer, including music, dance, and performances
- Manofim Art Cube Festival, which took place online
- Museum on the Seam - supporting cutting-edge exhibitions
- Muslala's art tracks project, celebrating community, art and sustainability outdoors
- Musrara Mix Festival held online
- Oud Festival online
- Paley Art Center – residency program for emerging artists from east Jerusalem
- The Khan Theater held an outdoor performance in Yemin Moshe
- Upgrading the C.A.T.A.M.O.N Dance Group website and making information accessible in Hebrew, English and Arabic



“The cool Jerusalem weather and the quaint alleys of the Yemin Moshe neighborhood, combined with the meticulous work of the show's creators and actors, made a spectacular evening which reminded us of the culture we’d been missing so much.”

AN AUDIENCE MEMBER PRAISING THE KHAN THEATER'S OUTDOOR PERFORMANCE IN YEMIN MOSHE





# CAPITAL PROJECTS

- Paley Center for the Arts – renovation of the auditorium
- Haim Hazaz Memorial Room at Mishkenot Sha'ananim



PALEY CENTER FOR THE ARTS



HAIM HAZAZ MEMORIAL ROOM





# LIST OF SUPPORTED INSTITUTIONS



- Art Cube Artists’ Studios • Barbur Gallery • Bar Kayma • Beita Contemporary Art Gallery
- Between Heaven & Earth Dance Center • Black Box Street Gallery • Bloomfield Science Museum • Body, Dance, Place
- C.A.T.A.M.O.N. Dance Group • Djanogly Visual Arts Center • Feel Beit - JSOC’s new home (Mekudeshet)
- Firqat Al Noor Music Ensemble • Hagat House for Culture & Community in Ein Kerem • Hamazkeka • Hamiffal
- Hassadna Jerusalem Music Conservatory • HaZira Interdisciplinary Center • He’arat Shulayim (Footnote)
- International Writers’ Festival • Israel Festival • Jerusalem Academy of Music & Dance
- Jerusalem Botanical Gardens • Jerusalem Cinemathèque – Israel Film Archives • Jerusalem Dance Theater
- Jerusalem International Film Festival • Jerusalem International Oud Festival • Jerusalem Jewish Film Festival
- Jerusalem Khan Theater • Jerusalem Music Center • Jerusalem Opera Festival
- Jerusalem Print Workshop • Jerusalem Street Orchestra • Jerusalem Theater – Center for the Performing Arts
- Ma’aleh School of Television, Film & Arts • Machol Shalem Dance House • Manofim Contemporary Art Festival
- Mashu Mashu Theater • Mikro Theater • Mishkenot Sha’ananim • Museum for Islamic Art
- Museum on the Seam • Muslala Arts Collective • Musrara, Naggar School of Art & Society
- National Library of Israel • New Spirit • Nissan Nativ Acting School • Outline Festival
- Paley Arts Center • Pianists’ Festival at the Jerusalem Theatre • Poetry Place
- Sam Spiegel Film & Television School • School of Visual Theater • Secular Yeshiva
- Studio of Her Own Women’s Art Center • To’Ar Art Shelter Gallery • Tower of David Museum
- Train Theater – Davidson Theatre • Vertigo Dance Company • Yellow Submarine







## FUTURE LEADERSHIP

The Jerusalem Foundation focuses on developing leadership and excellence in the city through its involvement in community activism and investment in the next generation. We provide funding and support to hundreds of students through scholarship programs, and create spaces for young people to develop skills and start their careers in Jerusalem. By promoting young civil leadership with a long term commitment to the city, and guaranteeing that all communities have access to opportunities to excel, we safeguard the future of Jerusalem.

“The bi-monthly learning sessions are engaging and thought-provoking. They give us tools to implement in our neighborhood and have an impact on individuals in our community”

YOUTH LEADER IN DISADVANTAGED NEIGHBORHOODS PROJECT



## KAYMA, THE GEORGE PINTO JERUSALEM LEADERSHIP FELLOWS PROGRAM

Kayma was launched by the Jerusalem Foundation in 2020 with the aim of creating a cadre of quality young leadership in Jerusalem. After an open call for fellows, and their selection, the first group of five fellows began the program last year.

The fellows are all PhD students, and each has been paired with a different organization which they will work at, to integrate into the fabric of Jerusalem's civil society, become familiar with the city and its challenges, and contribute to the ongoing development of Jerusalem, whilst creating a leadership network between the fellows.

## YOUTH LEADERS IN DISADVANTAGED NEIGHBORHOODS

In partnership with the Israel Scouts youth movement in Jerusalem and the Tene Yerushalmi organization, the Jerusalem Foundation established a program for youth leaders in disadvantaged neighborhoods which will inspire future leadership in Jerusalem. In each of the neighborhoods - Har Homa, Gilo, Armon Hanatziv and Pisgat Ze'ev - two students volunteer in return for a scholarship.

The program has been running since October 2020, and the participants have been organizing community events and conducting weekly youth activities and volunteer sessions. These activities encourage youth to engage with their peers, and also to feel a sense of responsibility toward, and contribute to, their local neighborhood.



## OTHER ACHIEVEMENTS AND SUPPORT:

---

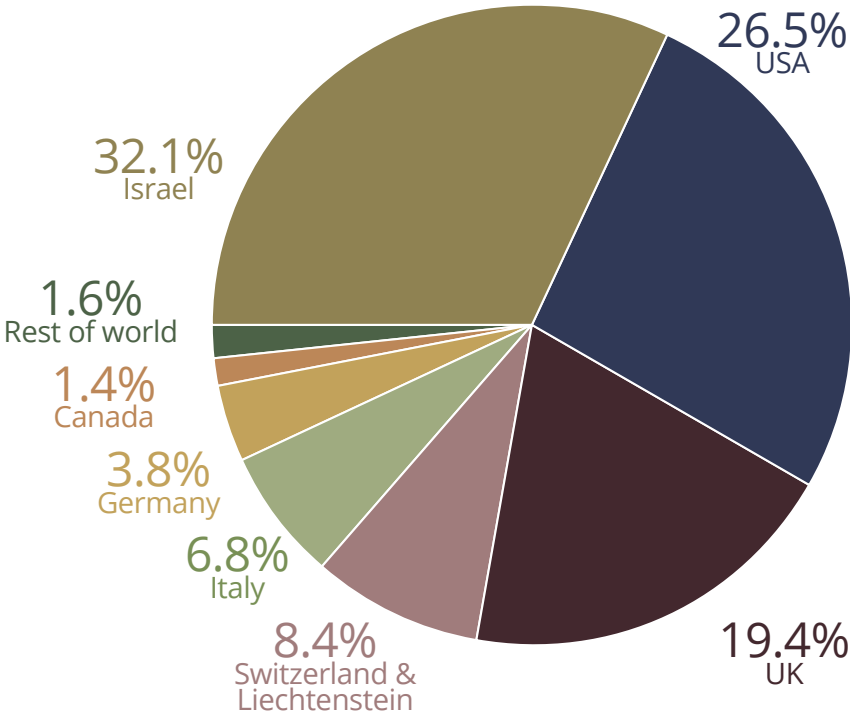
- Irene & Fred Lewy Youth Club - activities and programs for disadvantaged youth, including volunteering opportunities
- Jerusalem Institute for Policy Research - two-year evaluation on alleviating poverty & analysis of Covid statistics after the first wave
- SAHI (Hesed Youth Patrol) distributed thousands of food baskets to families in need and the elderly during the Covid pandemic
- Scholarships for higher education students (including through the Jerusalem Scholarship Fund) - scholarship funding for more than 900 students in Jerusalem
- Secular Yeshiva
- The Jerusalem Foundation Prize for Good Citizenship
- Wadi Joz Youth Club - the first purpose-built youth club in the neighborhood, which houses the only youth movement active in east Jerusalem
- Young Scientists Competition at the Bloomfield Science Museum



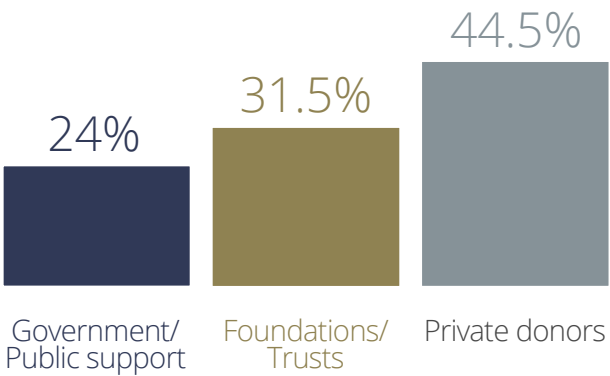


Donations: \$29,941,154

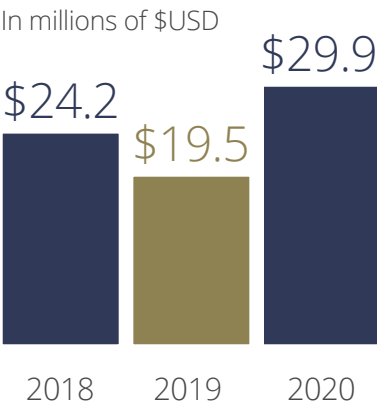
Contributions by country



Contributions by type of donor



Donations 2018-2020

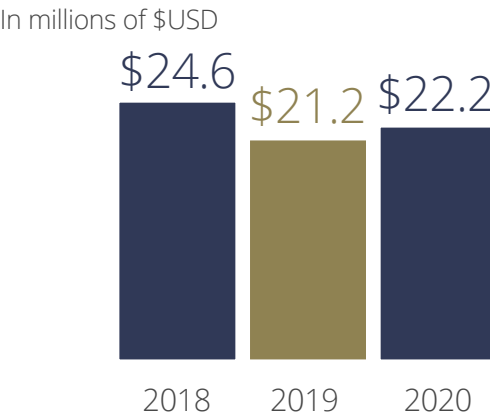


Allocations to Projects: \$22,240,705

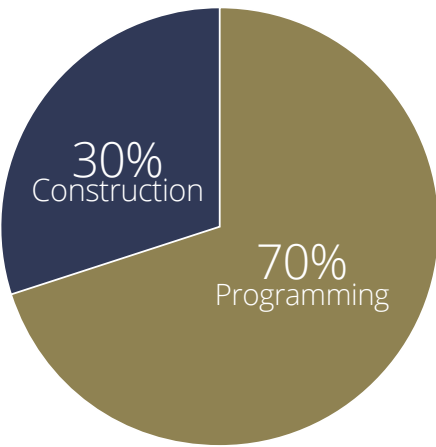
Programming expenditure by category



Allocations to projects 2018-2020



Expenditure by type of project



\*The difference between contributions received and expenditures on projects during any specified period of time derives from: a) contributions received from endowment funds; b) time lapse between the receipt of funds and expenditure; and c) expenditure for administration and fundraising costs.  
\*\* All amounts are in \$USD

## JERUSALEM FOUNDATION DONORS 2020

### AUSTRIA

Bundesministerium für Bildung, Wissenschaft  
und Forschung  
Nationalfonds der Republik Österreich für Opfer  
des Nationalsozialismus (Förderer)

### CANADA

George Adler  
Amayan Charitable Foundation (David & Sarena  
Koschitzky)  
Asper Foundation  
Pam & Paul Austin Family Foundation  
Azrieli Foundation  
Sharon & Ron Baruch  
Leslie Beck  
The Benjamin Foundation on behalf of the Estate  
of Malcom Coven  
Binah Foundation  
Bloomfield Family - Eldee Foundation  
Lois & David Buckstein Family Foundation  
Josh Burnett  
Irwin & Ariela Cotler  
Wendy R. Eisen  
Emerald Foundation  
First Narayever Congregation  
Kappy Flanders z"l  
Judith Finer-Freedman & Jeremy Freedman  
DH Gales Family Charity Trust  
Gewurz Family Foundation  
David M. Golden & Connie Putterman

Grossman Foundation  
Gary Grundman & Nancy Lerner  
Mark Heiten  
Agnes Herczeg  
International Fellowship of Christians and Jews of  
Canada  
Dr. Noah Ivers  
Jewish National Fund of Canada  
Dr. Suanne Kelman & Dr. Allan J. Fox  
Julia & Henry Koschitzky  
Mira & Saul Koschitzky  
Krauss Family Charitable Trust  
Michael Kuhl - Gitta Nishuma Foundation  
Lorri Kushnir  
Lederman Foundation  
Joanna Sloane & Jules Lewy  
David Lyons – Sir Jack Lyons Charitable Trust  
Mayvon Family Foundation - Rick and Yvonne  
Goldberg  
Harold Gloria Miloff Memorial Fund  
Lewis Mitz & Wendy Posluns  
Barry & Esther Naiberg Family Foundation  
Posluns Family Foundation  
Cyril & Dorothy, Joel & Jill Reitman Family  
Foundation  
Ruth & Sam Reitman Foundation  
David Rosenbaum & Debbie Strauss  
Shael Rosenbaum  
The Robert and Renee Rubinstein Charitable  
Foundation

Tina Julie Sapir  
Isadore & Rosalie Sharp  
Neil Shore  
Judith Shostack  
Shucor Investments Ltd  
Allan C. Silber  
Nathan & Lily Silver Family Foundation  
Silver Family Charitable Foundation (Bonnie  
Silver)  
Lawrence & Judith Tanenbaum Family Foundation  
Doron & Michal Telem  
Ehud & Miriam Telem  
Sharon Telem  
Larry & Tova Vickar  
David Walerstein  
Kenneth Weiner  
Gabi Weisfeld  
Joseph Wilder & Phyllis Pollock  
Wynn Family Charitable Foundation  
Atta & Henry Zieleniec

### FRANCE

Marina & Jacques Nahmias

### GERMANY

Anonymous Donors  
Axel Springer Stiftung  
Bertelsmann Stiftung  
Berthold Leibinger Stiftung  
Daimler AG  
Dr. Dr. Manfred Gentz und Ingrid Gentz  
Hoffnung geben – Zukunft leben, Daniel Müller  
und Freunde  
Familie von Holtzbrinck  
Karin von Holtzbrinck Stiftung

Im Dialog. Evangelischer Arbeitskreis für das  
christlich-jüdische Gespräch in Hessen und  
Nassau  
International Christian Embassy Jerusalem -  
German Branch  
Klaus Tschira Stiftung  
North Rhine-Westphalia, PM Armin Laschet  
Michael und Diana Rathgeber  
Prof. Dr. Jan-Philipp Reemtsma, Hamburger  
Stiftung zur Förderung von Wissenschaft und  
Kultur  
Regine Sixt Kinderhilfe Stiftung „Tränchen  
Trocknen“  
Sternstunden e.V.  
Volkswagen Aktiengesellschaft

### ISRAEL

Linda Adams  
Zvi Agmon  
Bank Hapoalim  
Bank of Jerusalem  
Tamara & Nahum Barnea  
Yoram Belizovsky  
David Brodet  
Check Point  
Ruth Cheshin  
Freeman Family Foundation  
Susie Guiora  
Gottesman Family Foundation  
Stuart Hershkowitz  
Meir Heth  
Intel Israel  
Yossi Kucik  
Laufer Family





Gabriel Leibler  
Harel Locker  
Sallai Meridor  
Ofer Levine  
Ogen Group  
Likhovski Family  
Jack, Joseph and Morton Mandel Foundation - Israel  
Mizrahi Tefahot Bank  
Ram Rosen  
Josiah Rotenberg and Gila Pollack  
Schusterman Foundation Israel  
Susanna Steindling  
Dror Strom  
Dan Suesskind

### ISRAEL - PUBLIC INSTITUTIONS

Ariel Municipal Corporation - Jerusalem  
Israel Ministry of Jerusalem and Heritage  
Jerusalem Development Authority  
Jerusalem Municipality  
National Insurance Institute of Israel - Bituach Leumi

### ITALY

Solo & Maurice Dwek Families  
Goren Monti Ferrari Foundation  
Simone, Michael, Jacopo and Mirella Haggiag  
Emilio & Guido Ottolenghi  
Simonetta Ascarelli  
Lino, Arturo, Ermanno Tedeschi  
Fondazione Terzo Pilastro  
Maria Teresa Venturini Fendi

### LIECHTENSTEIN

Anonymous Foundations  
Benecare Foundation

### NORWAY

Help Jews Home

### SWITZERLAND

Anne Frank Fonds  
Anonymous via Josef Bollag  
Anonymous Donors  
Fondation Arpe  
Jetty, Aron und Simon Blum-Stiftung  
Dr. Silvain Brunschwig Stiftung  
The DEAR Foundation, Sonja Dinner  
Diakonieverband Ländli  
Dr. Emile Dreyfus-Stiftung  
Isaac Dreyfus Bernheim Stiftung  
Saly Frommer Foundation  
Daniel Gablinger Stiftung  
Max und Erika Gideon Stiftung  
Dr. Georg und Josi Guggenheim-Stiftung  
The Helena Charitable Foundation  
Kirschner-Loeb Stiftung  
Jan Lutz  
Adolf und Mary Mil-Stiftung  
MZR Gedenkstiftung  
Gretel und Walter Picard-Weil Stiftung  
Michael und Diana Rathgeber  
Michael und Ellen Ringier  
S. + H. Rothschild Foundation  
Ruth und Paul Wallach Stiftung  
Wendepunkt Stiftung

### THE NETHERLANDS

Christians for Israel

### UNITED KINGDOM

Amberstone Trust  
Janice Atkin  
Gisela & Anthony Bloom  
Estate of Heddy Brook  
Sir Trevor Chinn  
Davidson Family Charitable Trust  
Dent Family  
Dame Vivien Duffield through the Clore Israel Foundation  
The Estate of Celia Gluck  
Grantham Court Properties Ltd.  
The Estate of Leo Gruss  
Martine and Peter Halban  
Harbour Charitable Trust  
Humanitarian Trust  
Kennedy Leigh Charitable Trust  
Sheila Koretz  
Lord & Lady Leigh of Hurley  
Morris Leigh Foundation  
Janice & Jack Livingstone  
M&C Trust  
Avril and Jonny Manson  
Marcus Margulies  
Aliza Moussaieff  
Hon. Marion and Guy Naggar  
NJD Charitable Trust  
Phillips and Rubens Charitable Trust  
The Estate of the Late George Pinto  
Rayne Trust  
The Rosenfeld Charitable Trust

Jill Samuels  
K C Shasha Charitable Foundation  
Archie Sherman Charitable Trust  
Sobell Foundation  
E C Sosnow Charitable Trust  
Wohl Legacy  
Della and Fred Simon Worms O.B.E., Endowment Fund  
Marjorie & Arnold Ziff Charitable Trust

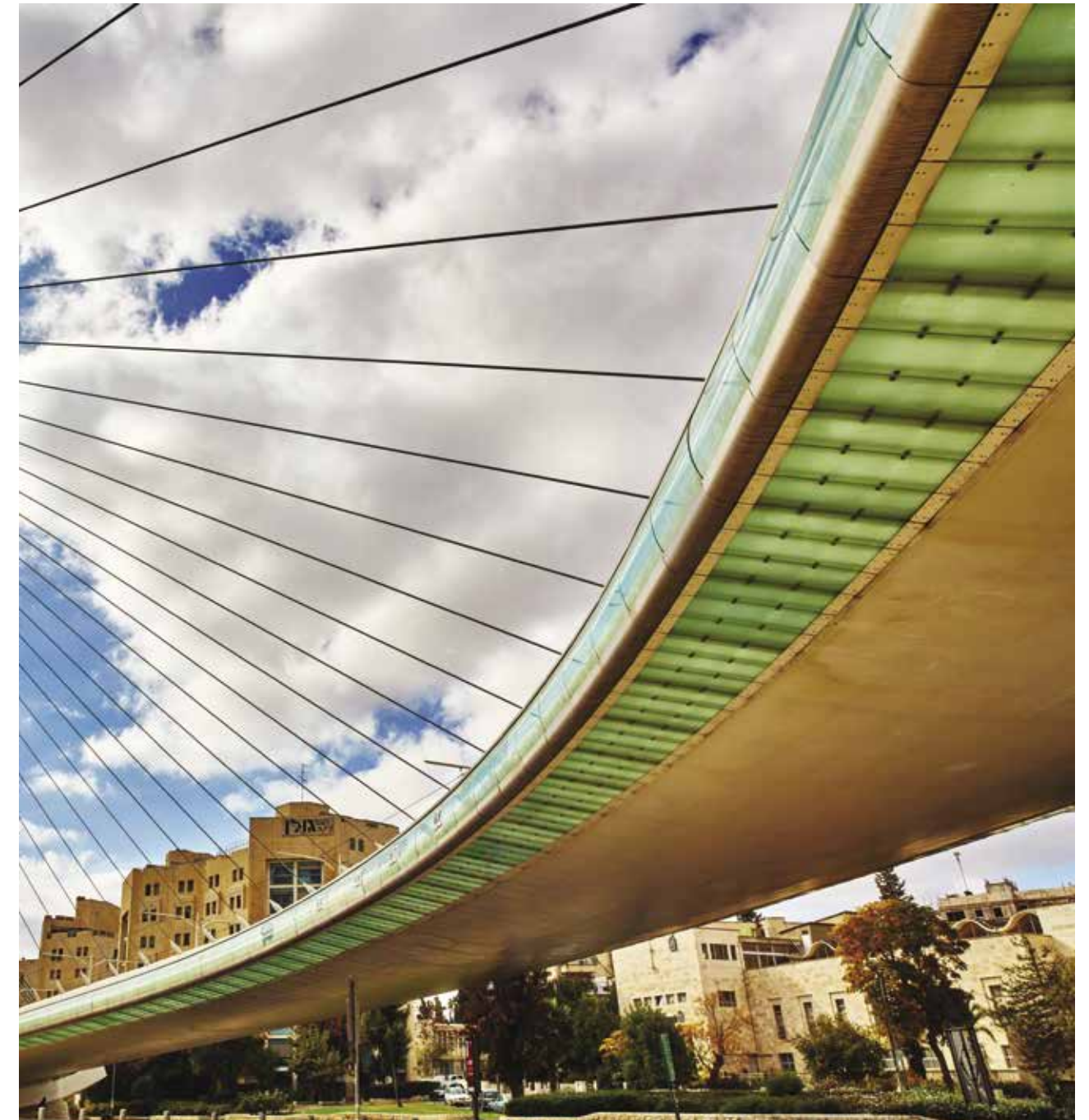
### UNITED STATES

Jean Ann Aldwell  
Isaac "Yitz" Applbaum  
Cassie Arison  
The Arison Family Foundation  
Andi and David Arnovitz  
Robert B. Asher  
Janice Atkin  
The Augustine Foundation  
Aviv Foundation  
Hannah Bacharach  
Bader Philanthropies Inc.  
Baron Capital Foundation  
Newton & Rochelle Becker  
Mark & Frances Lewy Berg  
Bern Schwartz Foundation  
Bialkin Family Foundation  
Jacob & Hilda Blaustein Fund  
The Hon. Michael R. Bloomberg  
Annette & Richard Blum  
Cornerstone Partners of New Jersey  
Irving & Marjorie Cowan Family Foundation  
Crown Family Philanthropies  
The Nathan Cummings Foundation



Claudia Davidoff & Joseph Kahan Foundation  
 Estate of Louis Edelstein  
 The Feldman Family Foundation  
 Joseph & Dorothy Goldberg Charitable Trust  
 Gottesman Fund  
 Abby & Moshe Greenberg  
 Kerry & David J. Greene  
 Hager Foundation  
 Alan G. Hassenfeld  
 Hassenfeld Family Foundation  
 Barbara Hines  
 The Estate of Samuel P. Spiegel  
 Marguerite Jossel Charitable Foundation  
 Karev Foundation  
 Estate of William Kauders  
 The Knapp Family Foundation  
 Koret Foundation  
 Jo Carole & Ronald S. Lauder  
 L.A.W. Foundation  
 Alice Edelman Lazoff & Mischa Lazoff Foundation  
 Nathan Leight  
 The Leir Foundation  
 Michael & Andrea Leven Foundation  
 Maimonides Fund  
 Jack, Joseph & Morton Mandel Foundation  
 Isidore Mayrock & Patti Gabel  
 Joseph & Harvey Meyerhoff Charitable Funds  
 Milken Institute  
 Theodore N. Mirvis  
 Allen Model  
 Leo Model Foundation  
 Nash Family Foundation  
 William S. Paley Foundation  
 Martin Peretz

PES Foundation  
 Jay & Hadasa Pomrenze Foundation  
 Price Philanthropies  
 Joe Pryzant  
 The Bernard and Audre Rapoport Foundation  
 David Recanati  
 Erin & Craig Reicher  
 Stephen R. Reiner  
 Robin Family Fund  
 Adam Rivkin  
 Jeannie & Arthur Rivkin  
 Rivkin Family Foundation  
 Donald L. Saunders  
 Steven G. Scheinfeld  
 Michael & Susan Schwartz  
 John M. Shapiro  
 Shapiro-Silverberg Foundation  
 The Starr Foundation  
 Helen & Stanley Steyer  
 Simonetta & Tommy Steyer  
 Ruth and Herbert Wander  
 Winnick Family Foundation





## LEGACIES & ENDOWMENTS

### Gifts to Jerusalem for all time

Edward Agostini Revocable Trust  
Asher Bar Estate  
Eliezer & Lucie Behar Estate  
Elliot James Belkin Estate  
Arnold Bernhard Estate  
Leonard Bernstein Estate  
Nahum Bernstein Trust  
Georgia Bertcher Estate  
Herta Berthold Estate  
Anna Blauner Estate  
Blaustein Foundation  
Dr. Hanna Bogucka  
Ann Bregman Estate  
Ernest Bretter Estate  
Merle Cahn Trust  
Carolito Foundation  
Clark Estate  
Louis & Florence Cohen Philanthropic Foundation  
Albert Cuenca  
Jacob Davies Estate  
Marthe Deloire  
Mrs. De Stoutz Estate  
Eva Dukes Estates  
Louis Edelstein Estate  
Jehiel & Anna Elyachar  
Katherine Falk Estate  
Fidanque Fund

Phil Fine Estate  
Mina Finkelstein Estate  
Augusta Fostel Estate  
Rachel Fridman Estate  
Phyllis Frey Estate  
Saly Frommer Estate  
Harvey Furgatch Estate  
Nathane Fuller  
Nathan Galston Estate  
Rose Garfin Estate  
Edna & Oscar Gass Estate  
Dena Geschwind Estate  
Golden Era  
David Goldman Endowment  
Richard and Rhoda Goldman Family Fund  
Horace W. Goldsmith Foundation  
Israel Goldstein & Family  
Greta Goodman Estate  
M Goodman Endowment  
Jacob L. Greenberg Estate  
Jerome Gumenick Philanthropic Fund  
Charles Haar  
Gottlieb Hammer Estate  
Haim Hazaz Estate  
Walter Hesselbach Fonds  
Regina Ilan Estate  
Augusta Kaye Estate  
J. Katz Fund  
Inge K. Kauders Estate  
William Kauders  
Miss Kate Kemper Estate  
Neomi (Monika) Kinzig  
Ruben Klamer  
Henry Kravis

Krzepicki Estate  
Alice Lazoff Estate  
Norman M. Leff Fdn. Inc. Estate  
Legacy Heritage Fund Ltd.  
Leir Estate  
Gustave Levy Estate  
Egon and Anna Libsch Foundation  
Mollie Parnis Livingstone Fund  
Loeb Foundation  
Martha J. Loewenstein  
Peter Lowenthal Estate  
Dora Lowin Estate  
Simone Mallah Estate  
Mandel Funds  
Magda Mayer Scholarship Fund  
Joseph M. Mazer Estate  
Lawrence Meinwald Estate  
Alice Menkes  
Jan Mitchell Fund  
Henry Montor Estate  
J Robert and Lynn Moskin  
Susan Myerson Estate  
Ostrovsky Family Fund  
Daniela Gechman Passal Estate  
Lillian Pavloff Estate  
Abraham Pekarsky Estate  
Fanny Penn Estate  
Jacob Perlow Estate  
George Pinto Estate  
Polinsky-Rivkin Family Foundation  
Sol Price Charitable Trust  
Margaret Richner  
Adele Singer Rifkind Fund  
Elfriede Kaethe Ritter

Ralph Robbins Estate  
Selma Pilavin Robinson Estate  
Daniel and Joanna Rose Fund  
Dr. Miriam Freund Rosenthal  
Arthur Rubinstein Estate  
Rubenstein Estate  
Salzberger Family  
Minnie Sasserath Estate  
Charles and Ruth Schapiro  
I. Meir Segals Estate  
Irene Sela  
Isidore & Helena Seibald Estate  
Reuben Shane Estate  
Esther Share Estate  
Ruth Silberberg Estate  
Ida Silverman Estate  
Rita Simon Estate  
John H. Slade Estate  
Leah Spanier Endowment Fund  
Spector Family Estate  
Sam Spiegel Estate  
Amalia Spiegelman Estate  
Louis & Bessie Stein Foundation  
Marie Syrkin Fellowship  
Tasman Estate, Norma L  
Jules Teitel Estate  
Esther Teitelbaum Estate  
Dr. Jurgen Thomas  
Treuhaft Foundation  
De Vorreuter Kusiel Estate  
Robert H. Weill  
Alice Weiss Estate  
Gordon B. Zacks Estate  
Ibrahim Zadeh Estate



## LEADERSHIP IN ISRAEL

**Founder:**  
Teddy Kollek z"l

**President Emerita & Cofounder:**  
Ruth Cheshin

**Chairman of the Board of Directors:**  
David Brodet

**Board of Directors\*:**  
Ronit Abramson  
Zvi Agmon  
Yoram Blizovsky  
Tamar Ben-David  
Ruth Cheshin  
Alan Hassenfeld  
Stuart Hershkowitz  
Prof. Meir Heth  
Gary Leibler  
Sallai Meridor  
Yohanna Arbib-Perugia  
Dan Suesskind  
Moshe Vidman

**General Assembly:**  
Yaron Angel  
Avraham Asheri  
Tamara Barnea

George Birenbaum  
Dr. Moshe Eliash  
Michael Federmann  
Martin Gerstel  
Ruth Gorenstein  
Peter Halban  
Nechama Hillman  
Richard Hirsch  
Julia Koschitzky  
Howard Leigh  
Amos Mar-Haim  
Lewis G. Mitz  
Shlomit Molho  
Jacob Ner-David  
Doron Rechlevsky  
Yaron Sadan  
George Saman  
Harry Sapir  
Yoni Shimshoni  
Ran Tuttnauer  
Prof. Menachem Ya'ari  
Amir Biram  
Ehud Nisan  
Mazal Tchorz

**Israel Desk Director:**  
Adit Barnett

\*Board of Directors members are also members of the General Assembly

## PROFESSIONAL STAFF IN ISRAEL

**President**  
Shai Doron

**General Director**  
Anat Tzur

**Legal Advisor**  
Lisa Avneri

**Chief Financial Officer**  
Yinon Oz-Ari

**Chief Development Officer**  
Nomi Yeshua

**Director of Projects and Arts & Culture**  
Ruth Diskin

**Director of Construction & Planning**  
Roi Singer

**Chief Liaison Officer JF & Jerusalem Municipality**  
Imry Ben Ami

**Spokesperson**  
Liat Rosner

## LEADERSHIP WORLDWIDE

### AUSTRIA

Jerusalem Foundation  
(Österreich)  
Goldschmiedgasse 6, Türe 11  
A-1010 Wien  
Austria

Tel: 43-664-9112-286  
Fax: 43-1-9124-3864  
anfrage@jfjlm.org

**President:**  
Ambassador Dr. Peter  
Jankowitsch,  
Federal Minister, ret.

**Vice Presidents:**  
KR Dr. Klaus Liebscher  
Dr. Ariel Muzicant  
Dipl.-Ing. Rudolf Schicker  
Dr. Rudolf Scholten,  
Federal Minister, ret

**Treasurer:**  
KR Adolf Wala  
**Secretary:**  
Dr. Peter Pöch  
**Members:**  
Shai Doron (ex officio)

Gertraud Auer Boreo  
Dr. Daniel Charim  
Prof. Dr. Raoul Kneucker  
Dr. Emil Mezgolits  
Mag. Thomas Moskovics  
Günter Rhomberg  
H.E. Kardinal Dr. Christoph  
Schönborn  
Dr. Heinrich Schaller  
Dr. Walter Schwimmer  
KR Victor Wagner

**General Secretary:**  
Mag. Philippe-Giuseppe  
Kupfer  
austria@jfjlm.org

**German-Speaking Desk Director:**  
Irène Pollak-Rein  
irenep@jfjlm.org

### CANADA

The Jerusalem Foundation of  
Canada  
250 Consumers Road  
Suite #301  
Toronto, Ontario M2J 4V6  
Toll Free: 1-877-484-1289  
Toronto: 416-922-0000

**Executive and Members of the Board:**

**President Emerita:**  
Julia Koschitzky, C.M.

**Past President:**  
Lewis R. Mitz

**President and Chair:**  
Joel Reitman

**Vice Chair:**  
David Golden

**Vice Presidents:**  
Gary Grundman  
David C. Rosenbaum

**Treasurer:**  
Doron Telem

**Secretary:**  
Shael Rosenbaum

**Members of the Board:**  
Ralph Bénatar  
David Berger  
Harry J. F. Bloomfield, Q.C.  
Ariela Cotler  
Heather Fenyes  
Dr. Sara Horowitz  
Sarah Krauss  
Lorri Kushnir



David Lyons  
Connie Putterman  
Evelyn Bloomfield Schachter  
Ari Shachter  
Judi Shostack  
Joseph J. Wilder, Q.C.

**Honourary Board Members:**

Charles Coffey, O.C.  
Senator Art Eggleton  
Senator Linda Frum  
Gina Godfrey  
Harry Gorman  
Moshe Safdie  
Isadore Sharp

**Chief Operating Officer, Canada  
Chief Development Officer,  
Jerusalem:**

Nomi Yeshua  
nomiy@jfjlm.org

**GERMANY**

Jerusalem Foundation  
Deutschland e.V.  
Postfach 38 02 25  
D-14112 Berlin Germany  
Tel: 49-30-8010-5890  
info@jfd-berlin.de

**First Chairman:**

Volker Bouffier,  
Prime Minister of Hesse

**Second Chairman:**

Torsten Albig,  
Prime Minister of Schleswig-  
Holstein, ret.

**Treasurer:**

Anke Eymer

**Members:**

Axel Springer SE  
HRH Bernhard Prince of Baden  
Daimler AG, represented by  
Dr. Kristina Eichhorst  
Albert Darboven  
Shai Doron  
Rudolf Dressler, Ambassador, ret.  
Dr. Christian Ehler, Member of  
the European Parliament  
Hans Eichel, Federal Minister,  
ret., Prime Minister of Hesse, ret.  
Dr. jur. Dr. rer. oec. h.c.  
Manfred Gentz  
Dr. h.c. Johannes Gerster  
Dr. jur. Stephan J. Holthoff-  
Pfortner, Minister of North-  
Rhine-Westphalia  
Dr. Michael J. Inacker  
Dr. h.c. Charlotte Knobloch,  
President of the Jewish  
Community of Munich and  
Upper Bavaria  
Prof. Dr. h.c. mult. Roland Koch,  
Prime Minister of Hesse, ret.  
Dr. Christine Kreiner

Winfried Kretschmann,  
Prime Minister of Baden-  
Wuerttemberg  
Michael Kretschmer, Prime  
Minister of the Free State of  
Saxonia  
Armin Laschet, Prime Minister  
of North Rhine-Westphalia  
Dr. phil. Nicola Leibinger-  
Kammüller  
Dr. Peter Linder, Honorary  
Consul General of the Grand  
Duchy of Luxembourg  
Reinhard Meier  
Liz Mohn  
Ralph Müller-Beck, State  
Secretary, ret.  
Dr. Volker Pannen, Mayor of  
Bad Bentheim  
Herbert Pfennig  
Matthias Platzeck, Prime  
Minister of Brandenburg, ret.  
Dr. Elisabeth Preuß, Deputy  
Mayor of Erlangen, ret.  
Prof. Dr. Jürgen Rüttgers,  
Prime Minister of North Rhine-  
Westphalia, ret.  
Prof. Dr. h.c. Annette Schavan,  
Federal Minister ret.  
André Schmitz, State Secretary  
of Culture of Berlin, ret.  
Ingo Senftleben, Member of  
Parliament of Brandenburg

Prof. Dr. Dr. h.c. Bernhard  
Servatius  
Sixt SE, represented by Regine  
Sixt, Honorary Consul General  
of Barbados  
Dr. Markus Söder, Prime  
Minister of Bavaria  
Dr. h.c. Friede Springer  
Florian Streibl, Member of  
Bavarian Parliament and Floor  
Leader  
Prof. Dr. Rita Süßmuth,  
President of the Bundestag,  
ret., Federal Minister, ret.  
Prof. Dr. h.c. Erwin Teufel,  
Prime Minister of Baden-  
Wuerttemberg, ret.  
Prof. Dr. Bernhard Vogel, Prime  
Minister of Rhineland-Palatinate,  
ret., Prime Minister of the Free  
State of Thuringia, ret.  
Prof. Dr. Dr. h.c. Werner  
Weidenfeld  
Dieter Weiland  
Adriano Winkler  
Brigitte Zypries, Federal  
Minister, ret.

**National Director Germany:**

Gabriele Appel  
gabrielea@jfjlm.org

**Executive Director:**

Hildegard Radhauer  
info@jfd-berlin.de

**Germany Desk Director:**

Dr. Alexander A. Dubrau  
alexanderd@jfjlm.org

**ITALY**

Associazione Italiana  
Jerusalem  
Foundation – ONLUS  
Via Francesco Siacci, 6  
00197 Roma  
Italy

**Honorary Chairman:**

Mirella Petteni Haggiag

**Chairmen:**

Ermanno Tedeschi  
Vivien Buaron

**Members:**

Giorgio Cannariato  
Gabriella Cecchi  
Iole De Blasio  
Claudia Dwek  
Ginevra Elkann Gaetani  
Cherie Fadlun  
Anna Fendi  
Sabina Florio  
Micaela Goren Monti  
Lorenza Jona Celesia  
Tamar Millo  
Mirella Petteni Haggiag  
Fabio Alberto Regoli  
Virginia Ripa di Meana  
Maria Teresa Venturini Fendi

**Italy Desk Director:**

Tamar Millo  
tamarm@jfjlm.org

**SPAIN**

The Jerusalem Foundation Spain  
Montalban 9, Bajo izq.  
Madrid, Spain 28014  
Tel: +34+91-524-1123

**President:**

León Benelbas

**Members:**

Sophie Chetrit  
Arie Zehavi  
Anat Tzur

**SWITZERLAND**

Jerusalem Foundation  
Switzerland  
c/o Budliger Treuhand AG  
PO Box 1564  
CH-8027 Zürich  
Tel: 41-44-289-45-45  
Fax: 41-44-289-45-99  
anfrage@jfjlm.org

**President:**

e. NR Hans-Ulrich Bigler

**Treasurer:**

Peter Vollenweider





**Members:**

Shai Doron (ex officio)  
Josef (Ueli) Bollag  
Erika Gideon-Wyler  
Dr. Michael Rabner  
Dr. Ruth Bloch-Riemer  
Jizchak Schächter  
Anita Winter

**German-Speaking Desk****Director:**

Irène Pollak-Rein  
irenep@jfjlm.org

**UNITED KINGDOM**

The Jerusalem Foundation UK  
Administered by Prism the  
Gift Fund  
20 Gloucester Place  
W1U 8HA London  
Tel: 44-020-7009-9649

**Chairman:**

Lord Leigh of Hurley

**Founder:**

Leslie Paisner z"l

**Treasurer:**

Joanne Turner

**Executive Board and Trustees:**

Dame Vivien Duffield DBE  
Lord Leigh of Hurley  
Jack Livingstone, OBE

Carolyn Mishon

Guy Naggar

Martin Paisner, CBE

Michael Rosenfeld

Deanne Steinberg

Joanne Turner

**Advisory Committee:**

Peter Halban

Ninette Perahia

The Hon. Robert Rayne

Anthony Rosenfelder

Rachel Sopher

Adam Speigel

Lady Annabelle Weidenfeld

Lord Woolf

Dr. Michael Ziff

**UK National Director:**

Susan Winton

susanw@jfjlm.org

**UK Desk Director:**

Neil Greenbaum

neilg@jfjlm.org

**UNITED STATES**

The Jerusalem Foundation Inc.

420 Lexington Avenue

Suite 1645

New York, NY 10170

Tel: 212-6974188

Fax: 212-697-4022

**Chair:**

Alan G. Hassenfeld

**Executive Chair:**

James S. Snyder

**Secretary/Treasurer:**

Stephen R. Reiner

**General Counsel:**

Steven G. Scheinfeld, Esq.

**Members:**

Isaac Applbaum

Cassie Arison

David Bottoms

Susan Block Casdin

Daniel Crown

Lester Crown

Linda Jesselson

Dr. Jordan Kassalow

Nathan Leight

Rabbi Joy Levitt

Isidore Mayrock

Theodore Mirvis

Allen Model

Amb. Lyndon Olson, Jr.

David Recanati

Craig Reicher

Donald L. Saunders

John Shapiro

Herbert Wander, Esq.

**Executive Director:**

Joseph Nadis

jnadis@jfoundation.com







[www.jerusalemfoundation.org](http://www.jerusalemfoundation.org)

